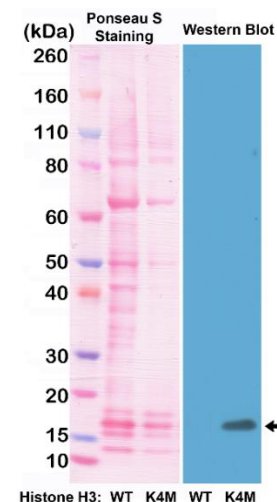
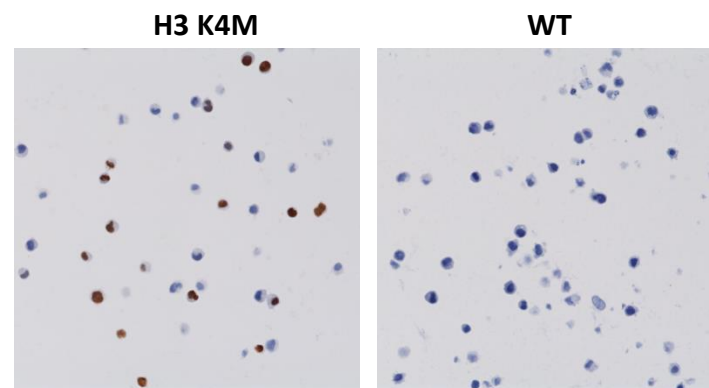


Certificate of Analysis

Product:	Rabbit Monoclonal Antibody Anti-Histone H3 K4M Rabbit Monoclonal Antibody, Clone RM363
Catalog No.:	31-1250-00-S/31-1250-00-L
Lot No.:	
Clone:	RM363
Specificity:	This antibody reacts to the Histone H3 K4M mutant. No cross reactivity with wild type Histone H3.
Application:	Western Blot, ELISA, and Immunohistochemistry
Immunogen:	A peptide corresponding to Histone H3 K4M mutant
Purity:	Protein A affinity purified from an animal origin-free culture supernatant
Size:	100 µL/400 µL
Buffer:	50% Glycerol/PBS with 1% BSA and 0.09% sodium azide
Usage:	Western Blot: 1:1000 – 10000 ELISA: 1:500 – 2500; IHC: 1:100 - 500.
Storage and Stability:	Stable for 1 Year at -20.0°C from date of receipt.
Country of Origin:	U.S.A.
Intended Use:	For Research Use Only Not for Diagnostic or Therapeutic Use



Western Blot analysis of cell lysates prepared from 293T transfected with a DNA construct encoding wild type (WT) or K4M mutant proteins of Histone H3, using anti-Histone H3 K4M rabbit monoclonal antibody, clone RM363.



Immunohistochemical staining of formalin fixed and paraffin embedded 293T cells transfected with a DNA construct encoding wild type (WT) or K4M mutant proteins of Histone H3, using anti-Histone H3 K4M rabbit monoclonal antibody, clone RM363.