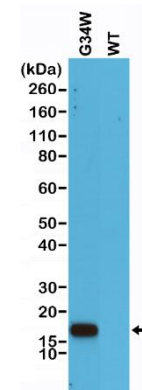
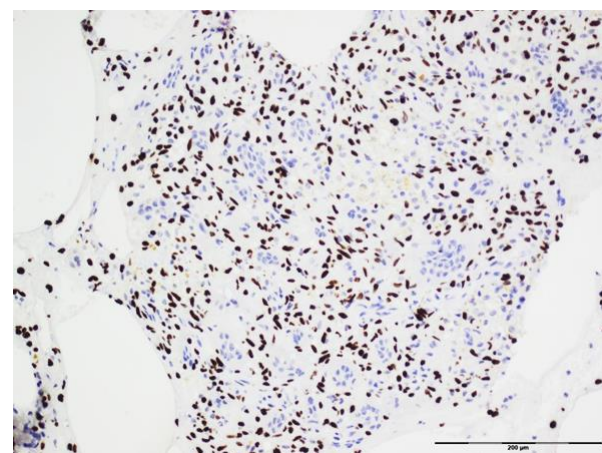


Certificate of Analysis

| | |
|-------------------------------|--|
| Product: | Rabbit Monoclonal Antibody Anti-Histone H3.3 G34W Rabbit Monoclonal Antibody, Clone RM263 |
| Catalog No.: | 31-1145-00-S/31-1145-00-L |
| Lot No.: | |
| Clone: | RM263 |
| Specificity: | This antibody reacts to the Histone H3.3 G34W mutant. No cross reactivity with wild type Histone H3.3 |
| Application: | Western Blot, ELISA, and Immunohistochemistry. |
| Immunogen: | A peptide corresponding to Histone H3.3 G34W mutant |
| Purity: | Protein A affinity purified from an animal origin-free culture supernatant |
| Size: | 100 µL/400 µL |
| Buffer: | 50% Glycerol/PBS with 1% BSA and 0.09% sodium azide |
| Usage: | Western Blot: 1:125 – 500; ELISA: 1:125 – 500; IHC: 1:100 - 200. |
| Storage and Stability: | Stable for 1 Year at -20.0°C from date of receipt. |
| Country of Origin: | U.S.A. |
| Intended Use: | For Research Use Only Not for Diagnostic or Therapeutic Use |



Western Blot analysis of cell lysates prepared from 293T, transfected with a DNA construct encoding G34W mutant or wild type proteins of Histone H3.3, using anti-Histone H3.3 G34W clone RM263.



Immunohistochemical staining of formalin fixed and paraffin Giant Cell Bone Tumor (GCBT) tissue section using Anti-Histone H3.3 G34W antibody, clone RM263. Image courtesy of Adrienne Flanagan, Department of Histopathology, RONH, Stanmore, Middlesex, UK