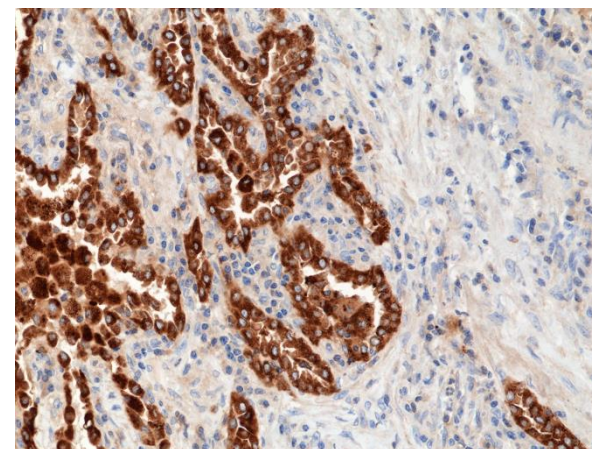
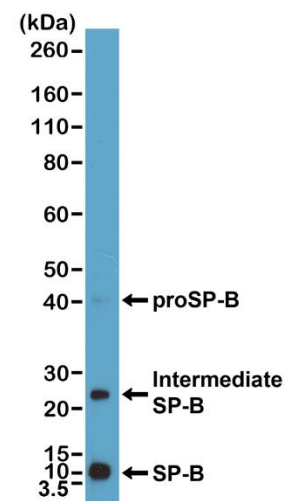


## Product Datasheet

|                               |  |
|-------------------------------|--|
| <b>Product:</b>               | Rabbit Monoclonal Antibody<br>Anti-SP-B (Surfactant protein B) Rabbit Monoclonal Antibody, Clone RM370             |
| <b>Catalog No.:</b>           | 31-1256-00   |
| <b>Clone:</b>                 | RM370  |
| <b>Specificity:</b>           | This antibody reacts to human SP-B (Surfactant protein B) and proSP-B  |
| <b>Application:</b>           | Immunohistochemistry, Western Blot   |
| <b>Immunogen:</b>             | A peptide corresponding to residues near the C-terminus of human SP-B (Surfactant protein B)                       |
| <b>Purity:</b>                | Protein A affinity purified from an animal origin-free culture supernatant   |
| <b>Size:</b>                  | 100 µL   |
| <b>Buffer:</b>                | 50% Glycerol/PBS with 1% BSA and 0.09% sodium azide  |
| <b>Usage:</b>                 | IHC: 1:500 -1:1000 dilution;<br>WB: 1:500 - 1:1000 dilution.<br>Stable for 1 Year at -20.0°C from date of receipt. |
| <b>Storage and Stability:</b> |  |
| <b>Country of Origin:</b>     | U.S.A.   |
| <b>Intended Use:</b>          | <b>For Research Use Only Not for Diagnostic or Therapeutic Use</b>   |



Immunohistochemical staining of formalin fixed and paraffin embedded human lung cancer tissue section using anti-SP-B rabbit monoclonal antibody (Clone RM370) at a 1:1000 dilution.



Western Blot of human lung tissue lysate using anti-SP-B rabbit monoclonal antibody (Clone RM370) at a 1:1000 dilution.