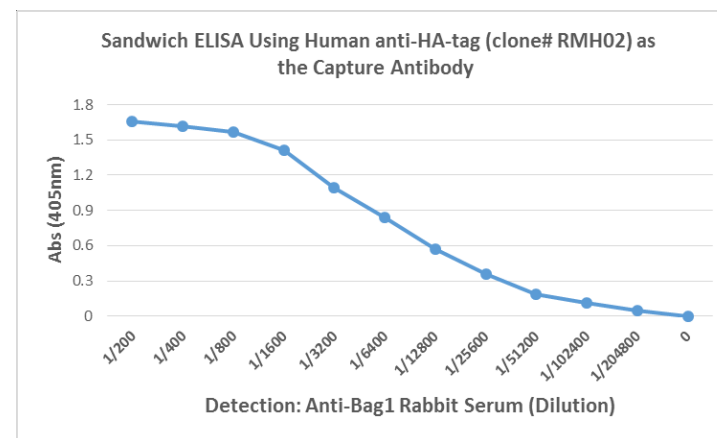
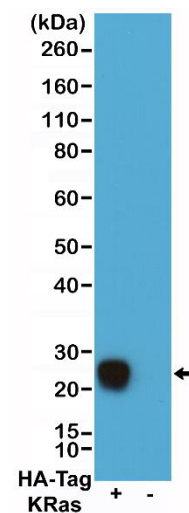


Certificate of Analysis

Product:	Rabbit/Human Chimeric Monoclonal Antibody Anti-HA-Tag Rabbit/Human Chimeric Monoclonal Antibody, Clone RMH02
Catalog No.:	54-1191-00
Lot No.:	
Clone:	RMH02
Description:	This antibody is a Rabbit-Human Chimeric antibody, made by fusion of the antigen binding region (variable domains of the heavy and light chains, VH and VL) of rabbit anti-HA-Tag monoclonal antibody (RM305), with the constant domain of Human IgG1. This antibody is recognized only by an anti-Human IgG secondary antibody.
Specificity:	This antibody reacts to recombinant proteins containing a HA-Tag fused to either the amino or carboxy terminus. No cross reactivity with any endogenous protein.
Application:	ELISA (Capturer or Detector), Western Blot
Immunogen:	A peptide corresponding to HA-tag (Human influenza hemagglutinin amino acids 98-106).
Purity:	Protein A affinity purified from an animal origin-free culture supernatant.
Size:	100 µg
Concentration:	1.0 mg/mL
Buffer:	50% Glycerol/PBS with 0.09% sodium azide
Usage:	ELISA: Capturer: 0.5 µg/mL – 2 µg/mL; Detector: 0.01 µg/mL – 0.5 µg/mL; WB: 0.1 µg/mL – 1 µg/mL.
Storage and Stability:	Stable for 1 Year at -20.0°C from date of receipt.
Country of Origin:	U.S.A.
Intended Use:	For Research Use Only Not for Diagnostic or Therapeutic Use



Sandwich ELISA performed on whole lysate of LNCaP cells overexpressing HA-tag Bag1 protein. ELISA plate was coated with 50uL/well of chimeric human anti-HA-Tag antibody Clone RMH02 (1ug/mL) as the capture antibody. Anti-Bag1 rabbit serum was used as the detection antibody, followed by an alkaline phosphatase conjugated anti-Rabbit IgG as the Secondary antibody.



Western blot of 293T cells transfected (+) or non-transfected (-) with a DNA construct encoding HA-Tag KRas fusion protein, using anti-HA-tag rabbit monoclonal antibody (clone RM305) at 0.1 ug/mL, followed by a HRP conjugated anti-Human IgG secondary antibody.