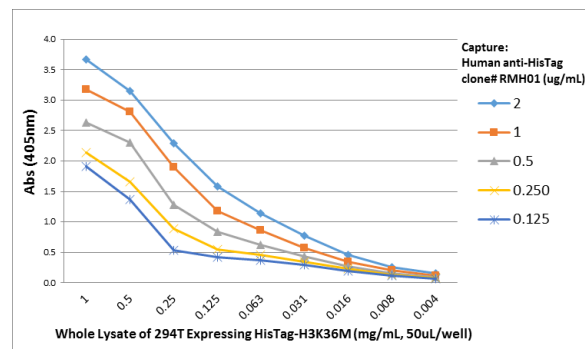
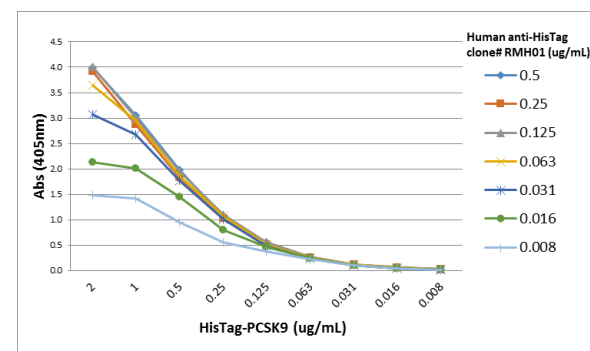


Certificate of Analysis

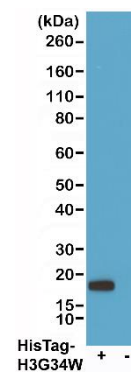
Product:	Rabbit/Human Chimeric Monoclonal Antibody Anti-His-Tag Rabbit/Human Chimeric Monoclonal Antibody, Clone RMH01
Catalog No.:	54-1161-00
Lot No.:	
Clone:	RMH01
Description:	This antibody is a Rabbit-Human Chimeric antibody, made by fusion of the antigen binding region (variable domains of the heavy and light chains, VH and VL) of rabbit anti-HisTag monoclonal antibody (RM146), with the constant domain of Human IgG1. The antibody is recognized only by an anti-Human IgG secondary antibody.
Specificity:	This antibody reacts to recombinant proteins containing the 6xHis-Tag or 10xHis-Tag fused to either the amino or carboxy terminus. No cross reactivity with any endogenous protein in mammalian or bacteria cells.
Application:	ELISA (Capturer or Detector), Western Blot
Immunogen:	Mixture of a peptide with 6xHis-Tag at the N-terminus and another peptide with 6xHis-Tag at the C-terminus.
Purity:	Protein A affinity purified from an animal origin-free culture supernatant.
Size:	100 µg
Concentration:	1.0 mg/mL
Buffer:	50% Glycerol/PBS with 0.09% sodium azide
Usage:	ELISA: Capturer: 0.1 µg/mL – 2 µg/mL; Detector: 0.01 µg/mL – 0.5 µg/mL; WB: 0.1 µg/mL – 1 µg/mL.
Storage and Stability:	Stable for 1 Year at -20.0°C from date of receipt.
Country of Origin:	U.S.A.
Intended Use:	For Research Use Only Not for Diagnostic or Therapeutic Use



Sandwich ELISA performed on different amounts of whole lysate of 293T cells transfected with a DNA construct encoding HisTag Histone H3 (K36M) protein, using 50uL/well of different concentrations of chimeric human anti-HisTag antibody Clone RMH01 as the capture antibody. Anti-H3K36M rabbit monoclonal antibody (RM193) was used as the detection antibody, followed by an alkaline phosphatase conjugated anti-Rabbit IgG as the Secondary antibody.



A titer ELISA performed on purified HisTag-PCSK9 recombinant protein. A serial dilution of chimeric human anti-HisTag antibody Clone RMH01 was used as the primary antibody. An alkaline phosphatase conjugated anti-Human IgG as the secondary antibody.



Western blot of 293T cells transfected (+) or untransfected (-) with a DNA construct encoding His-Tag Histone H3 (G34W) protein, using chimeric human anti-HisTag antibody Clone RMH01 at 0.2 µg/mL, followed by a HRP conjugated anti-Human IgG secondary antibody.