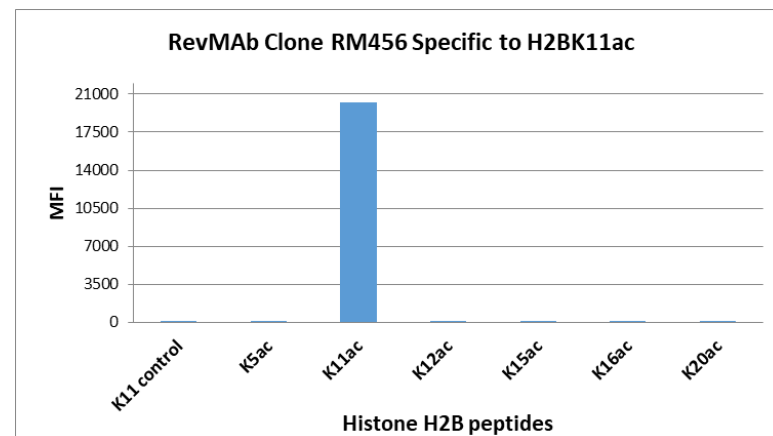
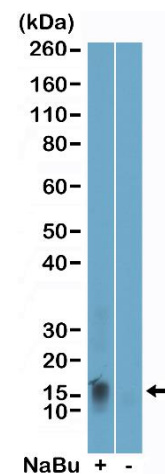


Certificate of Analysis

Product:	Rabbit Monoclonal Antibody Anti-Acetyl-Histone H2B (Lys11) Rabbit Monoclonal Antibody, Clone RM456
Catalog No.:	31-1348-00
Lot No.:	
Clone	RM456
Specificity	This antibody reacts to Histone H2B acetylated at Lysine 11 (K11ac). No cross reactivity with other acetylated Lysines in histones.
Application:	Western Blot, ELISA, Luminex
Immunogen:	An acetyl-peptide corresponding to Acetyl-Histone H2B (Lys11).
Purity:	Protein A affinity purified from an animal origin-free culture supernatant
Volume:	100 ug
Concentration:	1.0 mg/mL
Buffer:	50% Glycerol/PBS with 1% BSA and 0.09% sodium azide
Usage:	WB: 0.001 µg/mL – 0.01 µg/mL; ELISA: 0.2 µg/mL - 1 µg/mL; Luminex: 0.01 µg/mL – 1 µg/mL.
Storage and Stability:	Stable for 1 Year at -20.0°C from date of receipt.
Country of Origin:	U.S.A.
Intended Use:	For Research Use Only Not for Diagnostic or Therapeutic Use



RM456 specifically reacts to Histone H2B acetylated at Lysine 11 (K11ac). No cross reactivity with non-modified Lysine 11, or other acethylations in histone H2B.



Western Blot of acid extracts of HeLa cells treated (+) or untreated (-) with sodium butyrate, using Acetyl-Histone H2B (Lys11) rabbit monoclonal antibody (RM456) at 0.002 µg/mL.