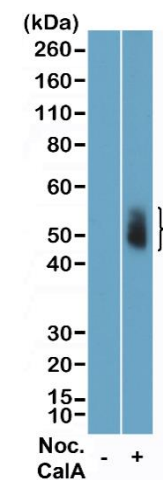
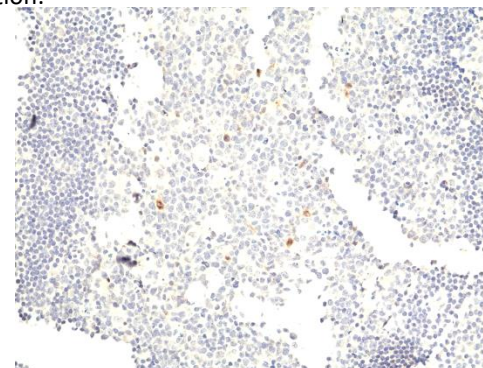


Certificate of Analysis

Product:	Rabbit Monoclonal Antibody Anti-Phospho-Aurora A (Thr288)/Aurora B (Thr232)/Aurora C (Thr198) Rabbit Monoclonal Antibody, Clone RM454
Catalog No.:	31-1346-00
Lot No:	
Clone:	RM454
Specificity:	This antibody reacts to human Aurora A/B/C only when phosphorylated at either Thr288, Thr232 or Thr198 respectively. There is no cross-reactivity to Aurora A/B/C that is not phosphorylated.
Application:	Western Blot, Immunocytochemistry
Immunogen:	A phospho-peptide corresponding to Phospho-Aurora A (Thr288)/Aurora B (Thr232)/Aurora C (Thr198)
Purity:	Protein A affinity purified from an animal origin-free culture supernatant
Size:	100 µL
Buffer:	50% Glycerol/PBS with 1% BSA and 0.09% sodium azide
Usage:	WB: 1:1000 -1:3000 dilution; IHC: 1:50 – 1:200 dilution
Storage and Stability:	Stable for 1 Year at -20.0°C from date of receipt.
Country of Origin:	U.S.A.
Intended Use:	For Research Use Only Not for Diagnostic or Therapeutic Use



Western Blot of the lysates of HaLa cells nontreated (-) or treated (+) with Nocodazole and Calyculin A, using Anti-Phospho-Aurora A (Thr288)/Aurora B (Thr232)/Aurora C (Thr198) rabbit monoclonal antibody (clone RM454) at a 1:2500 dilution.



Immunohistochemical staining of formalin fixed and paraffin embedded human tonsil tissue section, using Anti-Phospho-Aurora A (Thr288)/Aurora B (Thr232)/Aurora C (Thr198) rabbit monoclonal antibody (clone RM454) at a 1:50 dilution.