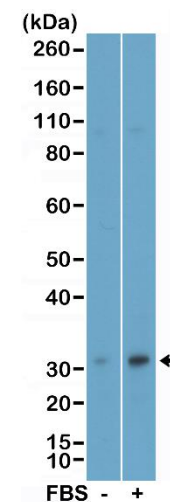


Certificate of Analysis

Product:	Rabbit Monoclonal Antibody Anti-Phospho-eIF4E (Ser209) Rabbit Monoclonal Antibody, Clone RM452
Catalog No.:	31-1344-00
Lot No:	
Clone:	RM452
Specificity:	This antibody reacts to human eIF4E only when phosphorylated at Ser209. There is no cross-reactivity to eIF4E that is not phosphorylated. This antibody may also react to mouse or rat Phospho-eIF4E (Ser209) as predicted by immunogen homology.
Application:	Western Blot
Immunogen:	A phospho-peptide corresponding to human Phospho-eIF4E (Ser209)
Purity:	Protein A affinity purified from an animal origin-free culture supernatant
Size:	100 µL
Buffer:	50% Glycerol/PBS with 1% BSA and 0.09% sodium azide
Usage:	WB: 1:1000 -1:2000 dilution;
Storage and Stability:	Stable for 1 Year at -20.0°C from date of receipt.
Country of Origin:	U.S.A.
Intended Use:	For Research Use Only Not for Diagnostic or Therapeutic Use



Western Blot of the lysates of MCF-7 cells nontreated (-) or treated (+) with fetal bovine serum, using Anti-Phospho-eIF4E (Ser209) rabbit monoclonal antibody (clone RM452) at a 1:1000 dilution.