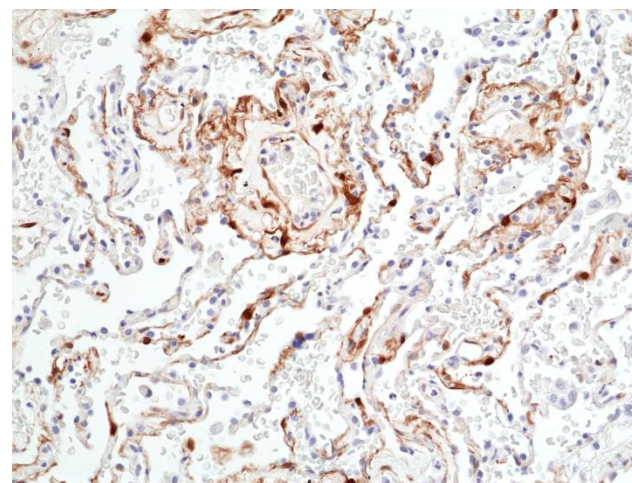
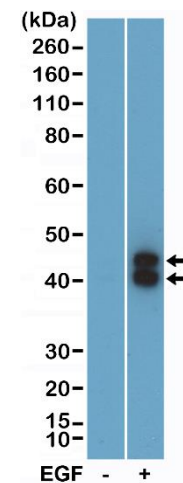


Certificate of Analysis

Product:	Rabbit Monoclonal Antibody Anti-Phospho-p44/42 MAPK (Erk1/2) (Thr202/Tyr204) Rabbit Monoclonal Antibody, Clone RM451
Catalog No.:	31-1343-00
Lot No:	
Clone:	RM451
Specificity:	This antibody reacts to human p44/42 MAPK (Erk1/2) only when phosphorylated at Thr202 and Tyr204. There is no cross-reactivity to Erk1/2 that is not phosphorylated. This antibody may also react to mouse or rat Phospho- Erk1/2 (Thr203/Tyr205) as predicted by immunogen homology.
Application:	Immunohistochemistry, Western Blot
Immunogen:	A phospho-peptide corresponding to human Phospho-p44/42 MAPK (Erk1/2) (Thr202/Tyr204)
Purity:	Protein A affinity purified from an animal origin-free culture supernatant
Size:	100 µL
Buffer:	50% Glycerol/PBS with 1% BSA and 0.09% sodium azide
Usage:	WB: 1:1000 -1:2000 dilution; IHC: 1:100 - 1:200 dilution.
Storage and Stability:	Stable for 1 Year at -20.0°C from date of receipt.
Country of Origin:	U.S.A.
Intended Use:	For Research Use Only Not for Diagnostic or Therapeutic Use



Immunohistochemical staining of formalin fixed and paraffin embedded human lung tissue section using Anti-Phospho-p44/42 MAPK (Erk1/2) (Thr202/Tyr204) rabbit monoclonal antibody (clone RM451) at a 1:200 dilution.



Western Blot of the lysates of A431 cells nontreated (-) or treated (+) with EGF, using Anti-Phospho-p44/42 MAPK (Erk1/2) (Thr202/Tyr204) rabbit monoclonal antibody (clone RM451) at a 1:1000 dilution.