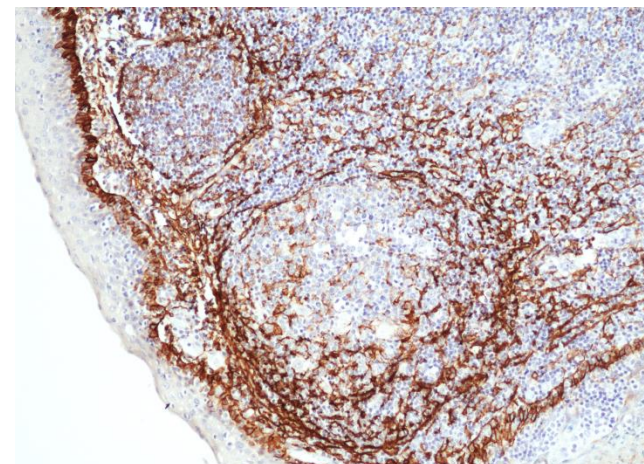
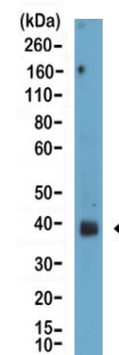


Certificate of Analysis

Product:	Rabbit Monoclonal Antibody Anti-Podoplanin (Gp36) Rabbit Monoclonal Antibody, Clone RM449
Catalog No.:	31-1341-00
Lot No:	
Clone:	RM449
Specificity:	This antibody reacts to human Podoplanin (Gp36)
Application:	Immunohistochemistry, Western Blot
Immunogen:	Recombinant human Podoplanin protein
Purity:	Protein A affinity purified from an animal origin-free culture supernatant
Size:	100 µL
Buffer:	50% Glycerol/PBS with 1% BSA and 0.09% sodium azide
Usage:	IHC: 1:100 -1:200 dilution; WB: 1:100 - 1:500 dilution.
Storage and Stability:	Stable for 1 Year at -20.0°C from date of receipt.
Country of Origin:	U.S.A.
Intended Use:	For Research Use Only Not for Diagnostic or Therapeutic Use



Immunohistochemical staining of formalin fixed and paraffin embedded human tonsil tissue section using anti-Podoplanin rabbit monoclonal antibody (Clone RM449) at a 1:100 dilution.



Western Blot the lysates of human prostate tissue lysate using anti-Podoplanin rabbit monoclonal antibody (Clone RM449) at a 1:100 dilution.