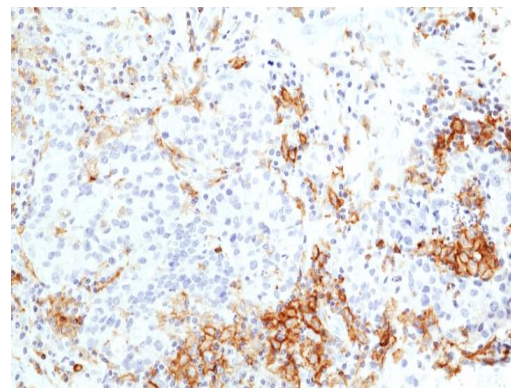
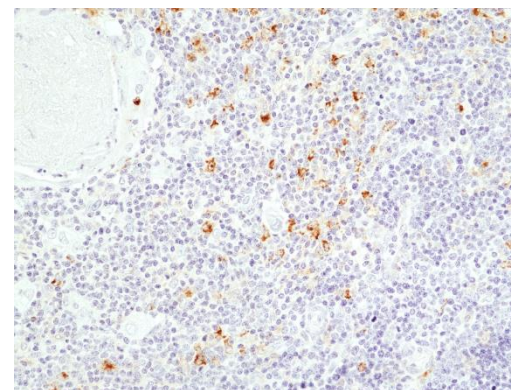


Certificate of Analysis

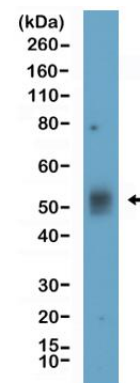
Product:	Rabbit Monoclonal Antibody Anti-TIM3 (Hepatitis A virus cellular receptor 2) Rabbit Monoclonal Antibody, Clone RM448
Catalog No.:	31-1340-00
Lot No.:	
Clone:	RM448
Specificity:	This antibody reacts to human TIM3 (Hepatitis A virus cellular receptor 2)
Application:	Immunohistochemistry, Western Blot
Immunogen:	Recombinant human TIM3 (Hepatitis A virus cellular receptor 2) protein
Purity:	Protein A affinity purified from an animal origin-free culture supernatant
Size:	100 µL
Buffer:	50% Glycerol/PBS with 1% BSA and 0.09% sodium azide
Usage:	IHC: 1:100 -1:200 dilution; WB: 1:1000 – 1:2000 dilution.
Storage and Stability:	Stable for 1 Year at -20.0°C from date of receipt.
Country of Origin:	U.S.A.
Intended Use:	For Research Use Only Not for Diagnostic or Therapeutic Use



Immunohistochemical staining of formalin fixed and paraffin embedded human lung cancer tissue section using anti-TIM3 rabbit monoclonal antibody (Clone RM448) at a 1:200 dilution.



Immunohistochemical staining of formalin fixed and paraffin embedded human thymus tissue section using anti-TIM3 rabbit monoclonal antibody (Clone RM448) at a 1:200 dilution.



Western Blot the lysates of Daudi cells using anti-TIM3 rabbit monoclonal antibody (Clone RM448) at a 1:1000 dilution.