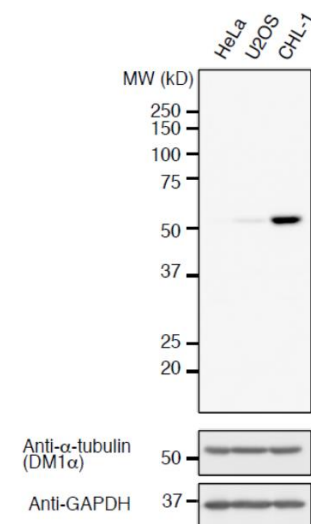
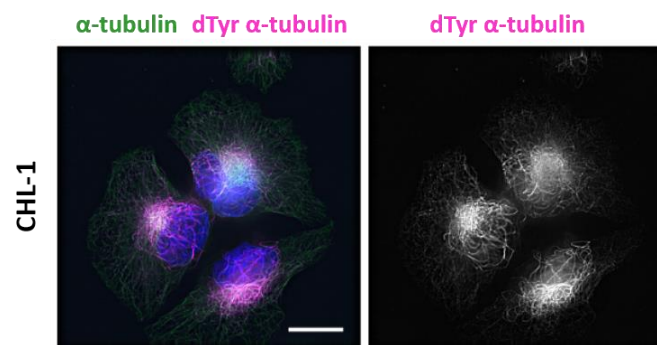


Certificate of Analysis

Product:	Rabbit Monoclonal Antibody Anti-Detyrosinated alpha-Tubulin Rabbit Monoclonal Antibody, Clone RM444
Catalog No.:	31-1335-00
Lot No:	
Clone:	RM444
Specificity:	This antibody specifically reacts to detyrosinated alpha-Tubulin, a PTM of α -tubulin where the C-terminal tyrosine residue has been cleaved.
Application:	Western Blot, Immunocytochemistry
Immunogen:	A peptide corresponding to detyrosinated alpha-Tubulin
Purity:	Protein A affinity purified from an animal origin-free culture supernatant
Size:	100 μ L
Buffer:	50% Glycerol/PBS with 1% BSA and 0.09% sodium azide
Usage:	WB: 1:1000 -1:2000 dilution; ICC/IF: 1:100 - 1:200 dilution.
Storage and Stability:	Stable for 1 Year at -20.0°C from date of receipt.
Country of Origin:	U.S.A.
Intended Use:	For Research Use Only Not for Diagnostic or Therapeutic Use



Western Blot analysis of HeLa, U2OS, and CHL-1 cell lysates using anti-Detyrosinated alpha-Tubulin rabbit monoclonal antibody (Clone RM444) at a 1:1000 dilution. *Image courtesy of Dr. Takashi Hotta from Ohi Lab, University of Michigan, Michigan, US*



Immunocytochemistry of CHL-1 using anti-Detyrosinated alpha-Tubulin rabbit monoclonal antibody (Clone RM444) at a 1:200 dilution (pink), anti-alpha-Tubulin (green) antibody, and DAPI (blue). Bar: 20 μ m. *Image courtesy of Dr. Takashi Hotta from Ohi Lab, University of Michigan, Michigan, US*