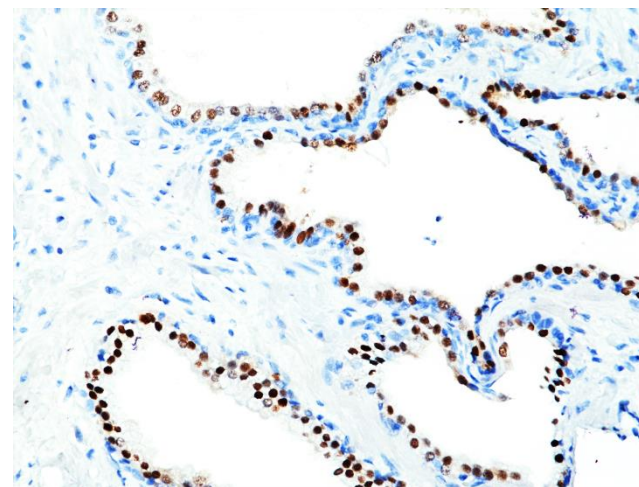
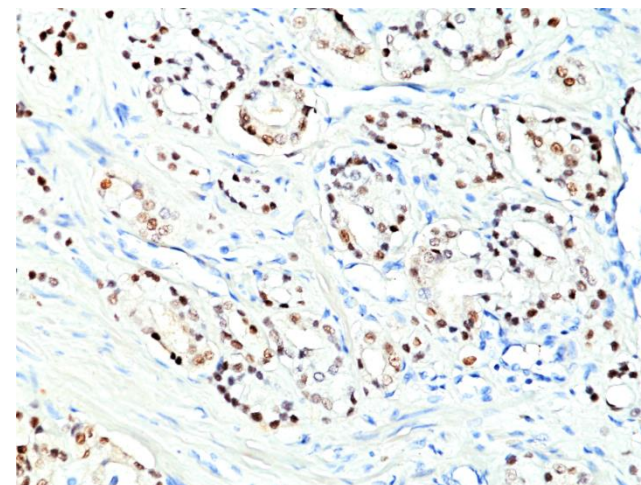


Certificate of Analysis

Product:	Rabbit Monoclonal Antibody Anti-Nkx3.1 Rabbit Monoclonal Antibody, Clone RM430
Catalog No.:	31-1318-00
Lot No.:	
Clone:	RM430
Specificity:	This antibody reacts to human Nkx3.1
Application:	Immunohistochemistry
Immunogen:	A peptide corresponding to the N-terminus of human Nkx3.1
Purity:	Protein A affinity purified from an animal origin-free culture supernatant
Size:	100 µL
Buffer:	50% Glycerol/PBS with 1% BSA and 0.09% sodium azide
Usage:	IHC: 1:100 -1:400 dilution
Storage and Stability:	Stable for 1 Year at -20.0°C from date of receipt.
Country of Origin:	U.S.A.
Intended Use:	For Research Use Only Not for Diagnostic or Therapeutic Use



Immunohistochemical staining of formalin fixed and paraffin embedded human prostate section using anti-Nkx3.1 rabbit monoclonal antibody (Clone RM430) at a 1:200 dilution.



Immunohistochemical staining of formalin fixed and paraffin embedded human prostate cancer tissue section using anti-Nkx3.1 rabbit monoclonal antibody (Clone RM430) at a 1:200 dilution.