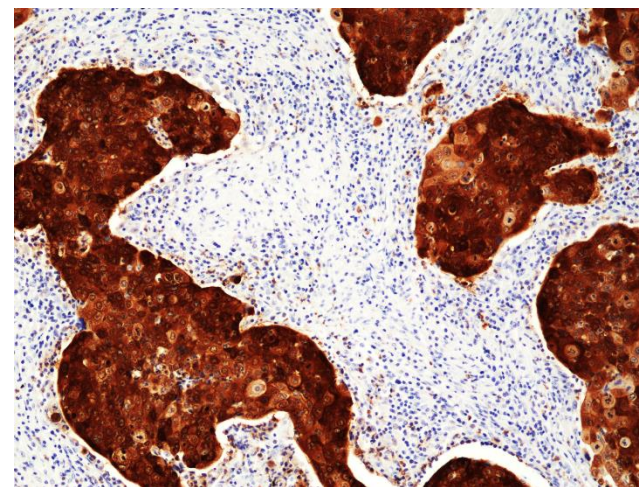
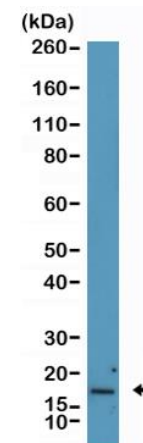


## Certificate of Analysis

<b>Product:</b>	Rabbit Monoclonal Antibody Anti-p16 INK4a Rabbit Monoclonal Antibody, Clone RM409
<b>Catalog No.:</b>	31-1295-00
<b>Lot No.:</b>	
<b>Clone:</b>	RM409
<b>Specificity:</b>	This antibody reacts to human p16
<b>Application:</b>	Immunohistochemistry, Western Blot
<b>Immunogen:</b>	A peptide corresponding to the C-terminus of human p16
<b>Purity:</b>	Protein A affinity purified from an animal origin-free culture supernatant
<b>Size:</b>	100 µL
<b>Buffer:</b>	50% Glycerol/PBS with 1% BSA and 0.09% sodium azide
<b>Usage:</b>	IHC: 1:100 -1:200 dilution WB: 1:1000 - 1:2000 dilution.
<b>Storage and Stability:</b>	Stable for 1 Year at -20.0°C from date of receipt.
<b>Country of Origin:</b>	U.S.A.
<b>Intended Use:</b>	<b>For Research Use Only Not for Diagnostic or Therapeutic Use</b>



Immunohistochemical staining of formalin fixed and paraffin embedded human cervical squamous carcinoma tissue section using Anti-p16 Rabbit Monoclonal Antibody (Clone RM409) at a 1:200 dilution.



Western Blot of 293 cell lysate using Anti-p16 rabbit monoclonal antibody (Clone RM409) at a 1:2000 dilution.