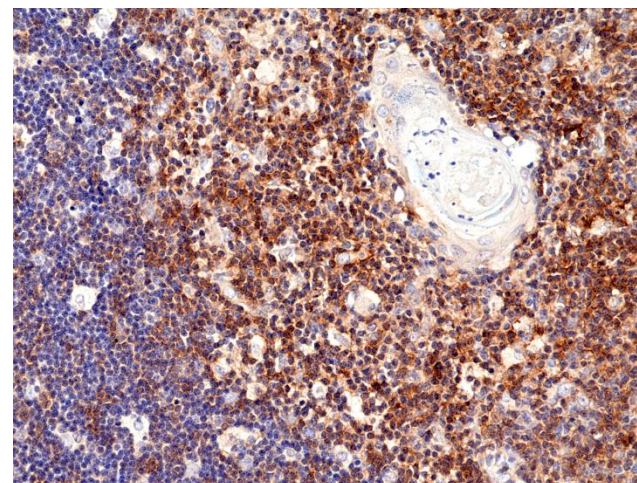
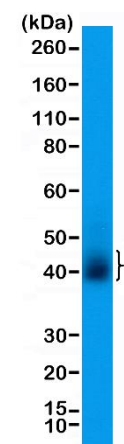


Certificate of Analysis

| | |
|-------------------------------|---|
| Product: | Rabbit Monoclonal Antibody Anti-CD28 Rabbit Monoclonal Antibody, Clone RM404 |
| Catalog No.: | 31-1290-00 |
| Lot No.: | |
| Clone: | RM404 |
| Specificity: | This antibody reacts to human CD28 |
| Application: | Immunohistochemistry, Western Blot |
| Immunogen: | A peptide corresponding to the C-terminus of human CD28 |
| Purity: | Protein A affinity purified from an animal origin-free culture supernatant |
| Size: | 100 µL |
| Buffer: | 50% Glycerol/PBS with 1% BSA and 0.09% sodium azide |
| Usage: | IHC: 1:100 -1:200 dilution WB: 1:100 - 1:200 dilution. |
| Storage and Stability: | Stable for 1 Year at -20.0°C from date of receipt. |
| Country of Origin: | U.S.A. |
| Intended Use: | For Research Use Only Not for Diagnostic or Therapeutic Use |



Immunohistochemical staining of formalin fixed and paraffin embedded human thymus using Anti-CD28 Rabbit Monoclonal Antibody (Clone RM404) at a 1:200 dilution.



Western Blot of human T-cell lysate using Anti-CD28 rabbit monoclonal antibody (Clone RM404) at a 1:200 dilution.