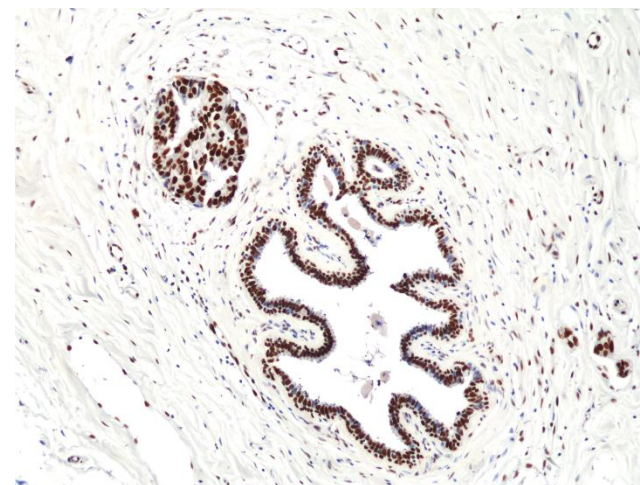


## Certificate of Analysis

|                               |  |
|-------------------------------|--|
| <b>Product:</b>               | Rabbit Monoclonal Antibody<br>Anti-Foxp1 Rabbit Monoclonal Antibody, Clone RM402   |
| <b>Catalog No.:</b>           | 31-1288-00   |
| <b>Lot No.:</b>               |  |
| <b>Clone:</b>                 | RM402  |
| <b>Specificity:</b>           | This antibody reacts to human Foxp1. This antibody may also react to mouse or rat Foxp1, as predicted by immunogen homology. |
| <b>Application:</b>           | Immunohistochemistry, Western Blot   |
| <b>Immunogen:</b>             | A peptide corresponding to the C-terminus of human Foxp1   |
| <b>Purity:</b>                | Protein A affinity purified from an animal origin-free culture supernatant   |
| <b>Size:</b>                  | 100 µL   |
| <b>Buffer:</b>                | 50% Glycerol/PBS with 1% BSA and 0.09% sodium azide  |
| <b>Usage:</b>                 | IHC: 1:100 -1:200 dilution<br>WB: 1:1000 - 1:2000 dilution.  |
| <b>Storage and Stability:</b> | Stable for 1 Year at -20.0°C from date of receipt.   |
| <b>Country of Origin:</b>     | U.S.A.   |
| <b>Intended Use:</b>          | <b>For Research Use Only Not for Diagnostic or Therapeutic Use</b>   |



Immunohistochemical staining of formalin fixed and paraffin embedded breast ductal carcinoma section using Anti-Foxp1 Rabbit Monoclonal Antibody (Clone RM402) at a 1:200 dilution.



Western Blot of 293 cell lysate using Anti-Foxp1 rabbit monoclonal antibody (Clone RM402) at a 1:1000 dilution.