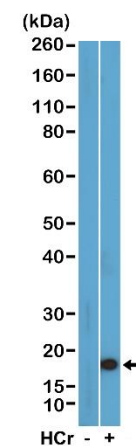
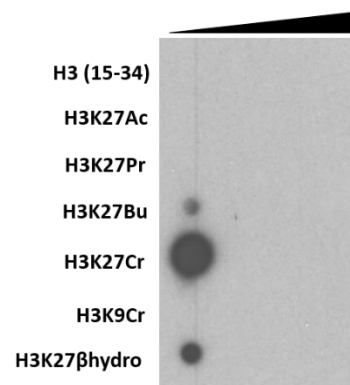


Certificate of Analysis

Product:	Rabbit Monoclonal Antibody Anti-Crotonyl-Histone H3 (Lys27) Rabbit Monoclonal Antibody, Clone RM401
Catalog No.:	31-1287-00
Lot No.:	
Clone	RM401
Specificity	This antibody reacts to Histone H3 crotonylated at Lysine 27 (K27cr). No cross reactivity with other crotonylated or acetylated Lysines in histone H3.
Application:	Western Blot, Dot Blot, Multiplex
Immunogen:	An crotonyl-peptide corresponding to Crotonyl-Histone H3 (Lys27).
Purity:	Protein A affinity purified from an animal origin-free culture supernatant
Size:	100 µg
Concentration:	1.0 mg/mL
Buffer:	50% Glycerol/PBS with 1% BSA and 0.09% sodium azide
Usage:	WB: 0.5 µg/mL - 5 µg/mL; DB: 0.5 µg/mL - 2 µg/mL;
Storage and Stability:	Stable for 1 Year at -20.0°C from date of receipt.
Country of Origin:	U.S.A.
Intended Use:	For Research Use Only Not for Diagnostic or Therapeutic Use



Western Blot of acid extracts of HeLa cells with or without sodium crotonate treatment using Anti-Histone H3K27cr Rabbit Monoclonal Antibody at 0.5 µg/mL.



A Peptide dotblot showing Anti-Histone H3K27cr Rabbit Monoclonal Antibody RM401 reacts specifically to Histone H3 crotonylated at Lysine 27 (H3K27-Crotonyl). (Image courtesy of Jibo Zhang from Strahl lab, UNC School of Medicine)