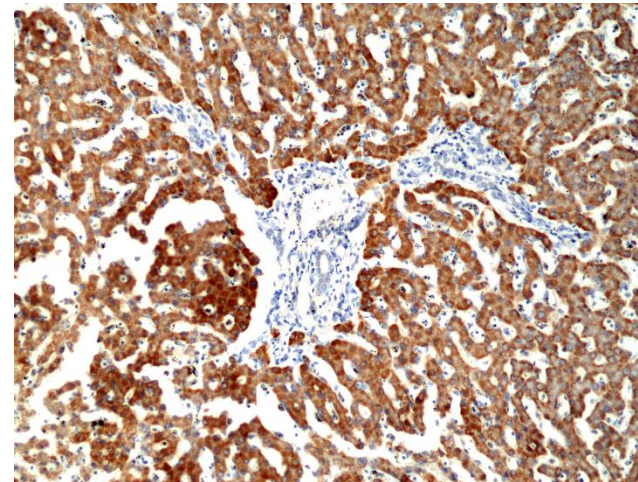
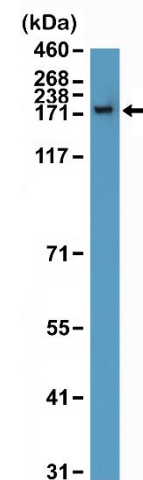


## Certificate of Analysis

<b>Product:</b>	Rabbit Monoclonal Antibody Anti-CPS1 Rabbit Monoclonal Antibody, Clone RM395
<b>Catalog No.:</b>	31-1281-00
<b>Lot No.:</b>	
<b>Clone:</b>	RM395
<b>Specificity:</b>	This antibody reacts to human CPS1 (Carbamoyl-phosphate synthase)
<b>Application:</b>	Immunohistochemistry, Western Blot
<b>Immunogen:</b>	A peptide corresponding to the N-terminus of human CPS1 (Carbamoyl-phosphate synthase). This antibody may also react to mouse or rat CPS1, as predicted by immunogen homology.
<b>Purity:</b>	Protein A affinity purified from an animal origin-free culture supernatant
<b>Size:</b>	100 µL
<b>Buffer:</b>	50% Glycerol/PBS with 1% BSA and 0.09% sodium azide
<b>Usage:</b>	IHC: 1:100 -1:200 dilution; WB: 1:5000 - 1:10000 dilution.
<b>Storage and Stability:</b>	Stable for 1 Year at -20.0°C from date of receipt.
<b>Country of Origin:</b>	U.S.A.
<b>Intended Use:</b>	<b>For Research Use Only Not for Diagnostic or Therapeutic Use</b>



Immunohistochemical staining of formalin fixed and paraffin embedded human liver tissue section using anti-CPS1 rabbit monoclonal antibody (Clone RM395) at a 1:100 dilution.



Western Blot of human T cells lysate using anti-CPS1 rabbit monoclonal antibody (Clone RM395) at a 1:10000 dilution.