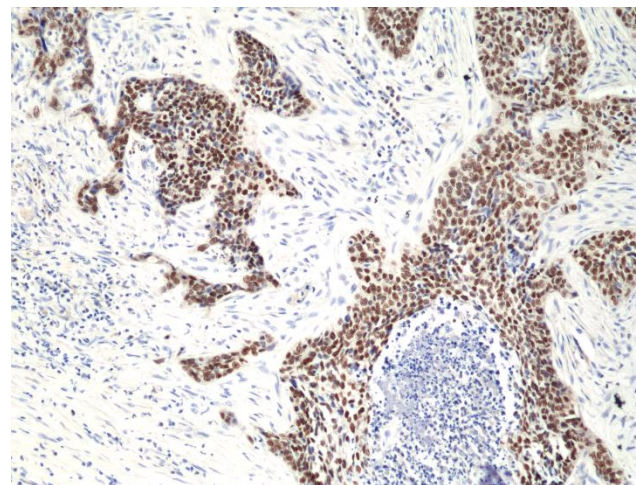
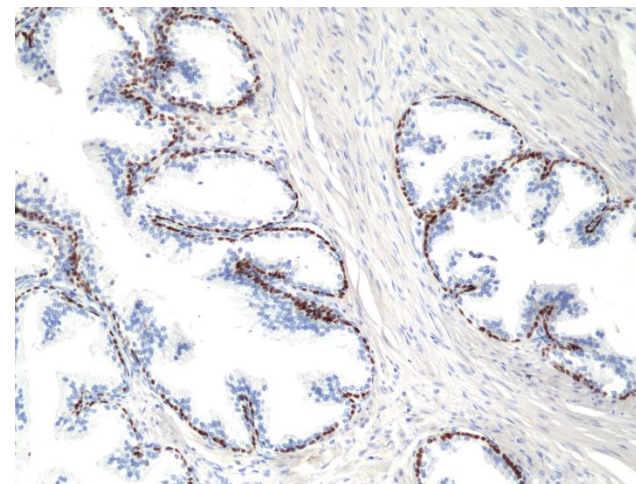


## Certificate of Analysis

<b>Product:</b>	Rabbit Monoclonal Antibody Anti-p40 ( $\Delta$ Np63) Rabbit Monoclonal Antibody, Clone RM392
<b>Catalog No.:</b>	31-1278-00
<b>Lot No.:</b>	
<b>Clone:</b>	RM392
<b>Specificity:</b>	This antibody reacts to human p40 ( $\Delta$ Np63). This antibody may also react to mouse p40 ( $\Delta$ Np63), as predicted by immunogen homology.
<b>Application:</b>	Immunohistochemistry
<b>Immunogen:</b>	A peptide corresponding to the N-terminus of human p40 ( $\Delta$ Np63)
<b>Purity:</b>	Protein A affinity purified from an animal origin-free culture supernatant
<b>Size:</b>	100 $\mu$ L
<b>Buffer:</b>	50% Glycerol/PBS with 1% BSA and 0.09% sodium azide
<b>Usage:</b>	IHC: 1:50 -1:200 dilution
<b>Storage and Stability:</b>	Stable for 1 Year at -20.0°C from date of receipt.
<b>Country of Origin:</b>	U.S.A.
<b>Intended Use:</b>	<b>For Research Use Only Not for Diagnostic or Therapeutic Use</b>



Immunohistochemical staining of formalin fixed and paraffin embedded human lung squamous carcinoma tissue section using anti-p40 ( $\Delta$ Np63) rabbit monoclonal antibody (Clone RM392) at a 1:50 dilution.



Immunohistochemical staining of formalin fixed and paraffin embedded human prostate tissue section using anti-p40 ( $\Delta$ Np63) rabbit monoclonal antibody (Clone RM392) at a 1:200 dilution.