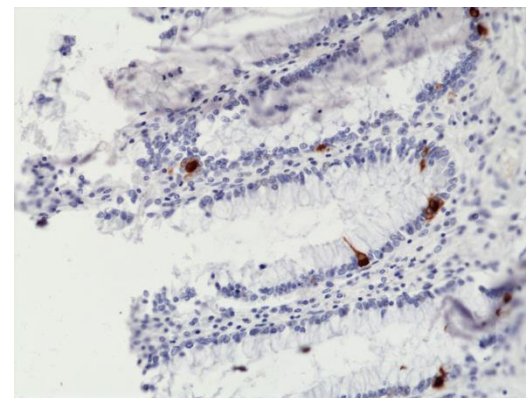
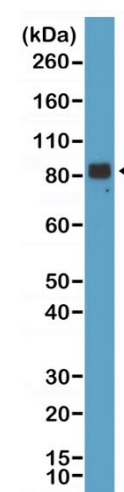


Certificate of Analysis

Product:	Rabbit Monoclonal Antibody Anti- Chromogranin A Rabbit Monoclonal Antibody, Clone RM385
Catalog No.:	31-1271-00
Lot No.:	
Clone:	RM385
Specificity:	This antibody reacts to Human Chromogranin A
Application:	Immunohistochemistry, Western Blot
Immunogen:	A peptide corresponding to the N-terminus of human Chromogranin A
Purity:	Protein A affinity purified from an animal origin-free culture supernatant
Size:	31-1271-00: 100 uL
Buffer:	50% Glycerol/PBS with 1% BSA and 0.09% sodium azide
Usage:	IHC: 1:1000 -1:10000 dilution; WB: 1:1000 - 1:2000 dilution.
Storage and Stability:	Stable for 1 Year at -20.0°C from date of receipt.
Country of Origin:	U.S.A.
Intended Use:	For Research Use Only Not for Diagnostic or Therapeutic Use



Immunohistochemical staining of formalin fixed and paraffin embedded normal human colon tissue section using anti-Chromogranin A rabbit monoclonal antibody (Clone RM385) at a 1:10000 dilution.



Western Blot of Human brain tissue lysate using anti-Chromogranin A rabbit monoclonal antibody (Clone RM385) at a 1:1000 dilution.