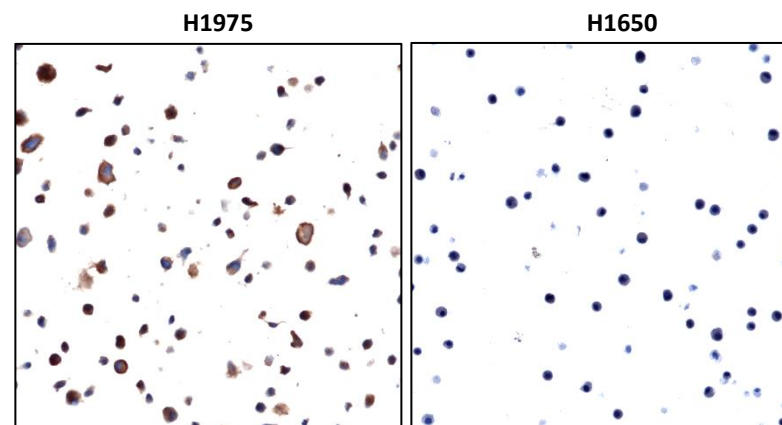
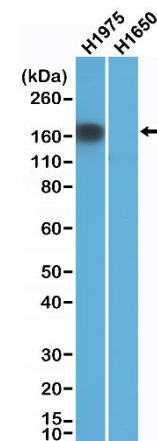


Certificate of Analysis

Product:	Rabbit Monoclonal Antibody Anti-EGFR(L858R) Rabbit Monoclonal Antibody, Clone RM380
Catalog No.:	31-1266-00
Lot No.:	
Clone:	RM380
Specificity:	This antibody reacts to human EGFR (L858R) Mutant Specific).
Application:	Immunohistochemistry, Western Blot
Immunogen:	A peptide corresponding to the human EGFR L858R mutant
Purity:	Protein A affinity purified from an animal origin-free culture supernatant
Size:	100 µL
Buffer:	50% Glycerol/PBS with 1% BSA and 0.09% sodium azide
Usage:	IHC: 1:100 -1:200 dilution WB: 1:1000 - 1:2000 dilution.
Storage and Stability:	Stable for 1 Year at -20.0°C from date of receipt.
Country of Origin:	U.S.A.
Intended Use:	For Research Use Only Not for Diagnostic or Therapeutic Use



Immunohistochemical staining of formalin fixed and paraffin embedded H1975 and H1650 cell section using Anti-EGFR(L858R) Rabbit Monoclonal Antibody (Clone RM380) at a 1:100 dilution.



Western Blot of H1975 and H1650 cells lysate using anti-EGFR(L858R) rabbit monoclonal antibody (Clone RM380) at a 1:1000 dilution.