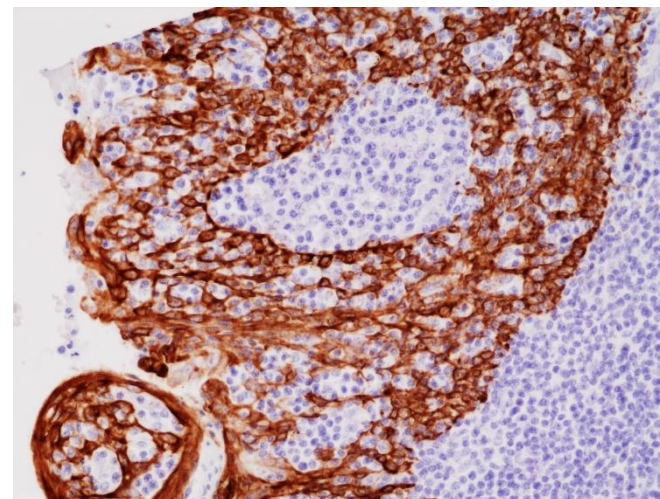
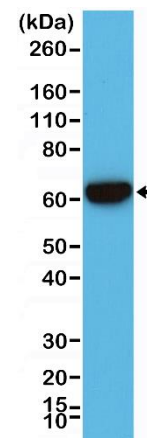


Certificate of Analysis

Product:	Rabbit Monoclonal Antibody Anti-CK-5/CK-6 (Cytokeratin 5/ Cytokeratin 6) Rabbit Monoclonal Antibody, Clone RM341
Catalog No.:	31-1227-00
Lot No.:	
Clone:	RM341
Specificity:	This antibody reacts to both human CK-5 (Cytokeratin 5) and CK-6 (Cytokeratin 6).
Application:	Immunohistochemistry, Western Blot
Immunogen:	A peptide corresponding to the C-terminus of Human Cytokeratin 5
Purity:	Protein A affinity purified from an animal origin-free culture supernatant
Size:	100 uL
Buffer:	50% Glycerol/PBS with 1% BSA and 0.09% sodium azide
Usage:	IHC: 1:500 -1:1000 dilution; WB: 1:2000 – 1:4000 dilution.
Storage and Stability:	Stable for 1 Year at -20.0°C from date of receipt.
Country of Origin:	U.S.A.
Intended Use:	For Research Use Only Not for Diagnostic or Therapeutic Use



Immunohistochemical staining of formalin fixed and paraffin embedded human tonsil tissue section using anti-CK-5/CK-6 rabbit monoclonal antibody (Clone RM341) at a 1:1000 dilution.



Western Blot of A431 cell lysates using RM341 using anti-CK-5/CK-6 rabbit monoclonal antibody (Clone RM341) at a 1:2000 dilution.