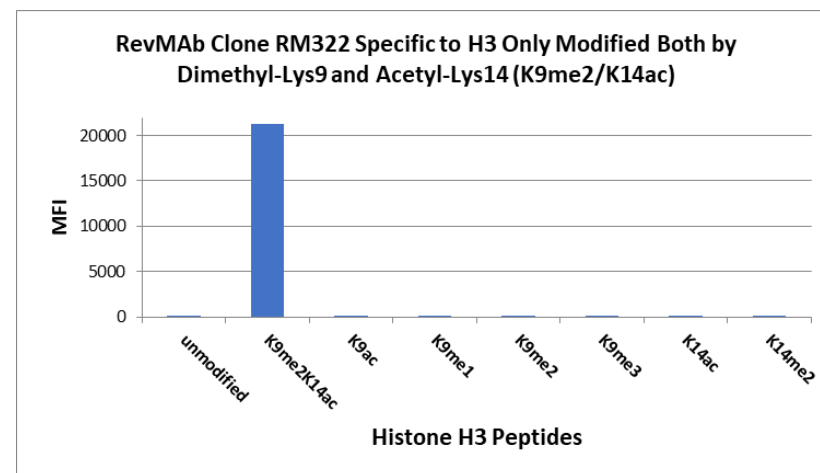
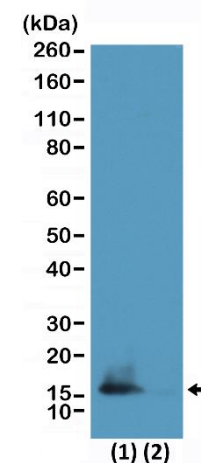


## Certificate of Analysis

<b>Product:</b>	Rabbit Monoclonal Antibody Anti-Dimethyl-Histone H3 (Lys9) and Acetyl-Histone H3 (Lys14) Rabbit Monoclonal Antibody, Clone RM322
<b>Catalog No.:</b>	31-1207-00
<b>Lot No.:</b>	
<b>Clone</b>	RM322
<b>Specificity</b>	This antibody reacts to Histone H3 only when modified by both methylation at lysine 9 and acetylation at lysine 14 (K9me2/K14ac). No cross reactivity with monomethylated Lysine 9 (K9me1), dimethylated Lysine 9 (K9me2), trimethylated Lysine 9 (K9me3), or acetylated Lysine 9/14 only, in histone H3.
<b>Application:</b>	Western Blot, Multiplex
<b>Immunogen:</b>	A dimethyl-peptide corresponding to dimethyl-Histone H3 (Lys9) and an acetyl-peptide corresponding to Acetyl-Histone H3 (Lys14).
<b>Purity:</b>	Protein A affinity purified from an animal origin-free culture supernatant
<b>Size:</b>	100 µg
<b>Concentration:</b>	1.0 mg/mL
<b>Buffer:</b>	50% Glycerol/PBS with 1% BSA and 0.09% sodium azide
<b>Usage:</b>	WB: 0.1 µg/mL – 1 µg/mL; Multiplex: 0.01 µg/mL – 1 µg/mL.
<b>Storage and Stability:</b>	Stable for 1 Year at -20.0°C from date of receipt.
<b>Country of Origin:</b>	U.S.A.
<b>Intended Use:</b>	<b>For Research Use Only Not for Diagnostic or Therapeutic Use</b>



RM322 specifically reacts to Histone H3 only when modified at both dimethyl-lysine 9 and acetyl-lysine 14 (K9me2/K14ac). No cross reactivity with non-modified Lysine 9/14, methylated Lysine 9 (K9me1, k9me2, k9me3) ONLY, acetylated Lysine 9/14 ONLY, or methylated Lysine 14 (K14me2) ONLY, in Histone H3.



Western Blot of HeLa cells (1) and recombinant histone H3.3 (2) using RM322 at 0.5 µg/mL.