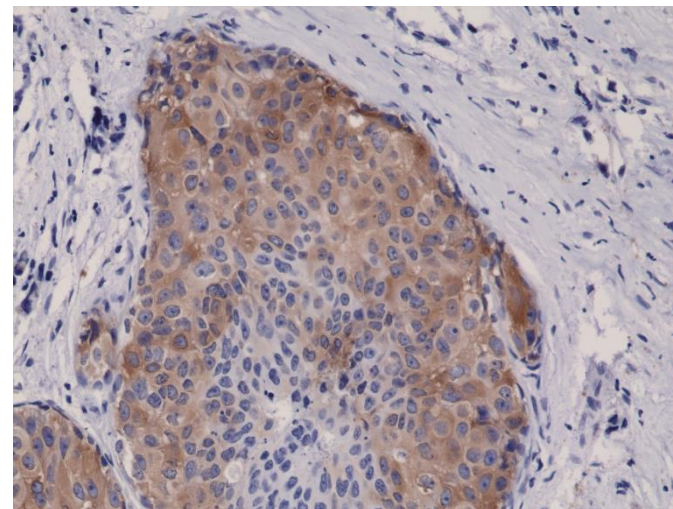
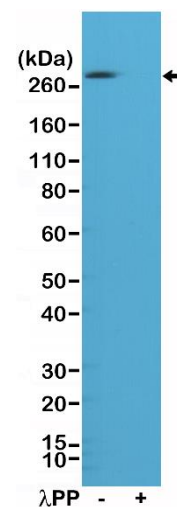


## Certificate of Analysis

<b>Product:</b>	Rabbit Monoclonal Antibody Anti-Phospho-Acetyl CoA Carboxylase (Ser79) Rabbit Monoclonal Antibody, Clone RM270
<b>Catalog No.:</b>	31-1151-00
<b>Lot No.:</b>	
<b>Clone:</b>	RM270
<b>Specificity:</b>	This antibody reacts to human Acetyl CoA Carboxylase (ACC1) only when phosphorylated at Ser79. There is no cross-reactivity to Acetyl CoA Carboxylase without phosphorylation at Ser79.
<b>Application:</b>	Immunohistochemistry, Western Blot
<b>Immunogen:</b>	A phospho-peptide corresponding to human Phospho-Acetyl CoA Carboxylase (Ser79)
<b>Purity:</b>	Protein A affinity purified from an animal origin-free culture supernatant
<b>Size:</b>	100 µL
<b>Buffer:</b>	50% Glycerol/PBS with 1% BSA and 0.09% sodium azide
<b>Usage:</b>	WB: 1:1000 -1:2000 dilution; IHC: 1:1000 - 1:5000 dilution.
<b>Storage and Stability:</b>	Stable for 1 Year at -20.0°C from date of receipt.
<b>Country of Origin:</b>	U.S.A.
<b>Intended Use:</b>	<b>For Research Use Only Not for Diagnostic or Therapeutic Use</b>



Immunohistochemical staining of formalin fixed and paraffin embedded human breast cancer tissue sections using Anti-Phospho-Acetyl CoA Carboxylase (Ser79) Rabbit Monoclonal Antibody (clone RM270) at a 1:5000 dilution.



Western Blot of A431 cell lysates, nontreated (-) or treated (+) with Lambda Protein Phosphatase ( $\lambda$ PP), using Anti-Phospho-Acetyl CoA Carboxylase (Ser79) Rabbit Monoclonal Antibody (Clone RM269) at a 1:1000 dilution.