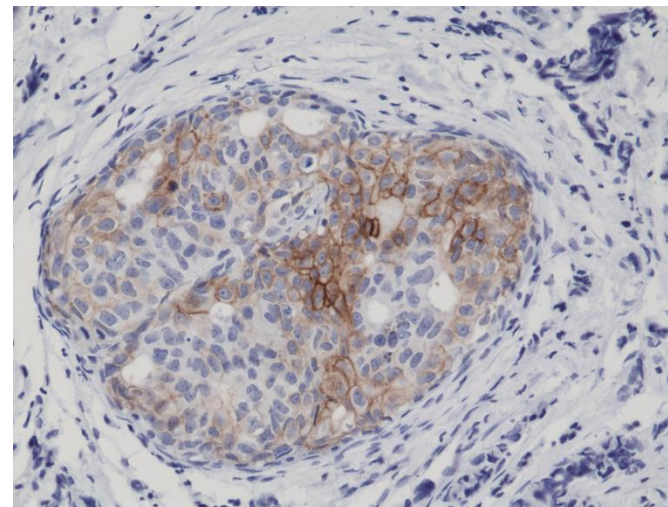
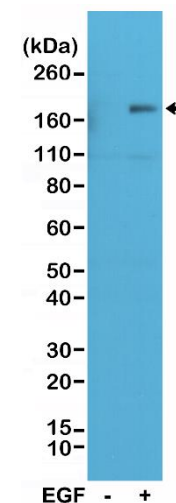


Certificate of Analysis

Product:	Rabbit Monoclonal Antibody Anti-Phospho-EGFR (Tyr1173) Rabbit Monoclonal Antibody, Clone RM269
Catalog No.:	31-1150-00
Lot No.:	
Clone:	RM269
Specificity:	This antibody reacts to human EGF Receptor only when phosphorylated at Tyr1173. There is no cross-reactivity to EGFR without phosphorylation at Tyr1173.
Application:	Immunohistochemistry, Western Blot
Immunogen:	A phospho-peptide corresponding to human Phospho-EGFR (Tyr1173)
Purity:	Protein A affinity purified from an animal origin-free culture supernatant
Size:	100 μ L
Buffer:	50% Glycerol/PBS with 1% BSA and 0.09% sodium azide
Usage:	WB: 1:500 -1:1000 dilution; IHC: 1:1000 - 1:5000 dilution.
Storage and Stability:	Stable for 1 Year at -20.0°C from date of receipt.
Country of Origin:	U.S.A.
Intended Use:	For Research Use Only Not for Diagnostic or Therapeutic Use



Immunohistochemical staining of formalin fixed and paraffin embedded human breast cancer tissue sections using Anti-Phospho-EGFR (Tyr1173) Rabbit Monoclonal Antibody (clone RM269) at a 1:5000 dilution.



Western Blot of A431 cell nontreated (-) or treated (+) with EGF, using Anti-Phospho-EGFR (Tyr1173) Rabbit Monoclonal Antibody (clone RM269) at a 1:500 dilution, showed Phospho-EGFR (Tyr1173) in EGF-treated A431 cells.