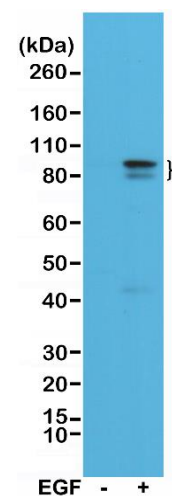
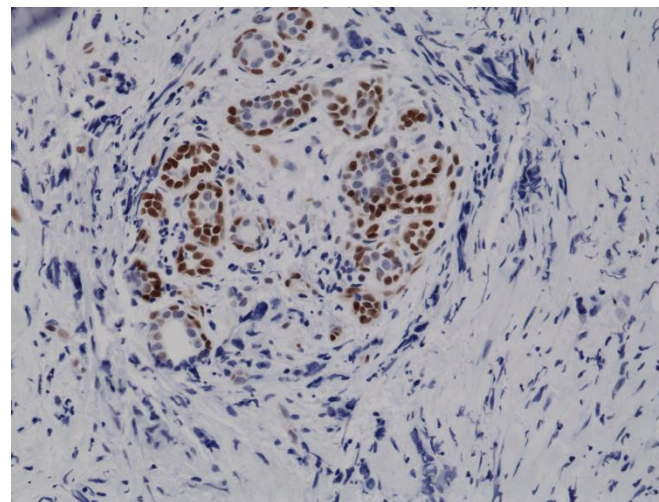


Certificate of Analysis

Product:	Rabbit Monoclonal Antibody Anti-Phospho-Stat3 (Tyr705) Rabbit Monoclonal Antibody, Clone RM261
Catalog No.:	31-1142-00
Lot No.:	
Clone:	RM261
Specificity:	This antibody reacts to human Stat3 only when phosphorylated at Tyr705. There is no cross-reactivity to stat3 without phosphorylation at Tyr705. This antibody may also react to mouse or rat Phospho-Stat3 (Tyr705), as predicted by immunogen homology.
Application:	Immunohistochemistry, Western Blot
Immunogen:	A phospho-peptide corresponding to human Phospho-Stat3 (Tyr705)
Purity:	Protein A affinity purified from an animal origin-free culture supernatant
Size:	100 µL
Buffer:	50% Glycerol/PBS with 1% BSA and 0.09% sodium azide
Usage:	WB: 1:500 -1:1000 dilution; IHC: 1:1000 - 1:5000 dilution.
Storage and Stability:	Stable for 1 Year at -20.0°C from date of receipt.
Country of Origin:	U.S.A.
Intended Use:	For Research Use Only Not for Diagnostic or Therapeutic Use



Western Blot of A431 cell lysates, nontreated (-) or treated (+) with EGF, using Anti-Phospho-Stat3 (Tyr705) Rabbit Monoclonal Antibody (clone RM261) at a 1:1000 dilution, showed Phospho-Stat3 (Tyr705) in EGF-treated A431 cells.



Immunohistochemical staining of formalin fixed and paraffin embedded human breast cancer tissue sections using Anti-Phospho-Stat3 (Tyr705) Rabbit Monoclonal Antibody (clone RM261) at a 1:10,000 dilution.