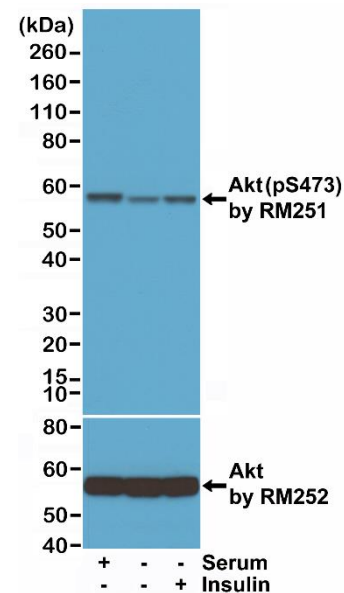
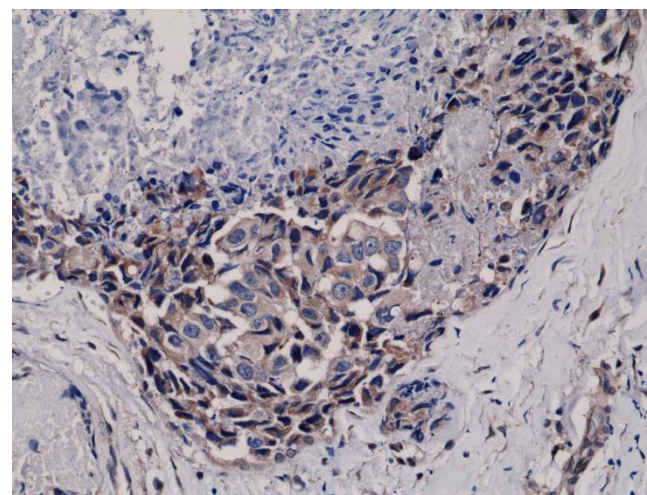


### Certificate of Analysis

<b>Product:</b>	Rabbit Monoclonal Antibody Anti-Phospho-Akt (Ser473) Rabbit Monoclonal Antibody, Clone RM251
<b>Catalog No.:</b>	31-1131-00
<b>Lot No.:</b>	
<b>Clone:</b>	RM251
<b>Specificity:</b>	This antibody reacts to human Akt only when phosphorylated at Ser473. There is no cross-reactivity with Akt without phosphorylation at Ser473. This antibody may also react to bovine, mouse or rat Phospho-Akt (Ser473), as predicted by immunogen homology.
<b>Application:</b>	Immunohistochemistry, Western Blot
<b>Immunogen:</b>	A phospho-peptide corresponding to human Phospho-Akt (Ser473)
<b>Purity:</b>	Protein A affinity purified from an animal origin-free culture supernatant
<b>Size:</b>	100 µL
<b>Buffer:</b>	50% Glycerol/PBS with 1% BSA and 0.09% sodium azide
<b>Usage:</b>	WB: 1:1000 -1:2000 dilution; IHC: 1:200 - 1:500 dilution.
<b>Storage and Stability:</b>	Stable for 1 Year at -20.0°C from date of receipt.
<b>Country of Origin:</b>	U.S.A.
<b>Intended Use:</b>	<b>For Research Use Only Not for Diagnostic or Therapeutic Use</b>



Western Blot of lysates from 293 cells either, grown in medium with serum, serum starved, or insulin treated. Using Anti-Phospho-Akt (Ser473) RM251 at a 1:1000 dilution or anti-Akt1 RM252 at a 1:1000 dilution.



Immunohistochemical staining of formalin fixed and paraffin embedded human breast cancer tissue sections using Anti-Phospho-Akt (Ser473) RM251 at a 1:400 dilution.