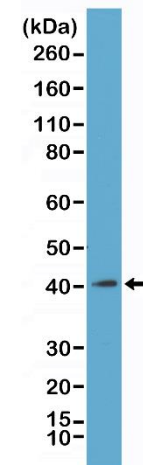
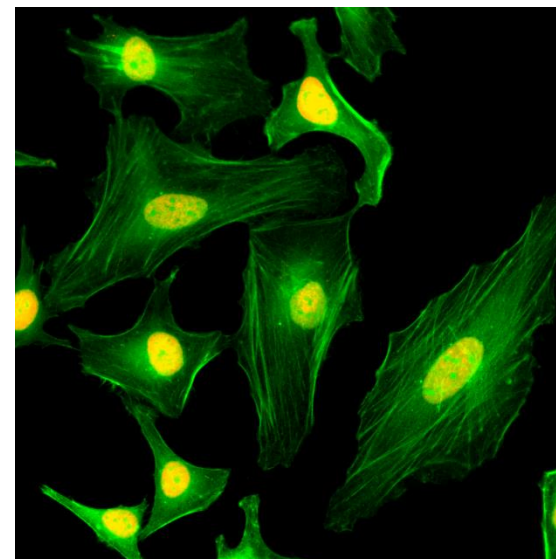


Certificate of Analysis

Product:	Rabbit Monoclonal Antibody Anti-Histone macroH2A1/macroH2A2 Rabbit Monoclonal Antibody, Clone RM248
Catalog No.:	31-1118-00
Lot No.:	
Clone	RM248
Specificity	This antibody reacts to the Core histone macro-H2A.1 and macro-H2A.2 proteins, independent of post-translational modifications. No cross reactivity with other histone proteins.
Application:	Western Blot, Immunocytochemistry, ELISA, Multiplex
Immunogen:	A peptide corresponding to the C-terminus of human Histone macroH2A1.
Purity:	Protein A affinity purified from an animal origin-free culture supernatant
Concentration:	1.0 mg/mL
Size:	100 µg
Buffer:	50% Glycerol/PBS with 1% BSA and 0.09% sodium azide
Usage:	WB: 0.5 µg/mL - 2 µg/mL; ICC: 1 µg/mL - 2 µg/mL; ELISA: 0.2 µg/mL - 1 µg/mL; Multiplex: 0.2 µg/mL - 1 µg/mL.
Storage and Stability:	Stable for 1 Year at -20.0°C from date of receipt
Country of Origin:	U.S.A.
Intended Use:	For Research Use Only Not for Diagnostic or Therapeutic Use



Western Blot of acid extracts from K562 cells, using RM248 at 1 µg/mL



Immunocytochemistry of HeLa cells, using anti-Histone macroH2A1/macroH2A2 Rabbit mAb RM248 (red). Actin filaments have been labeled with fluorescein phalloidin (green).