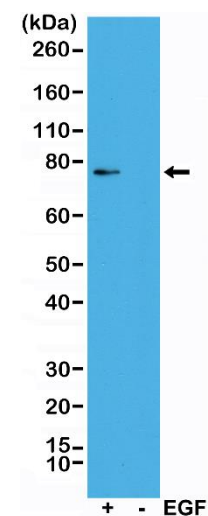
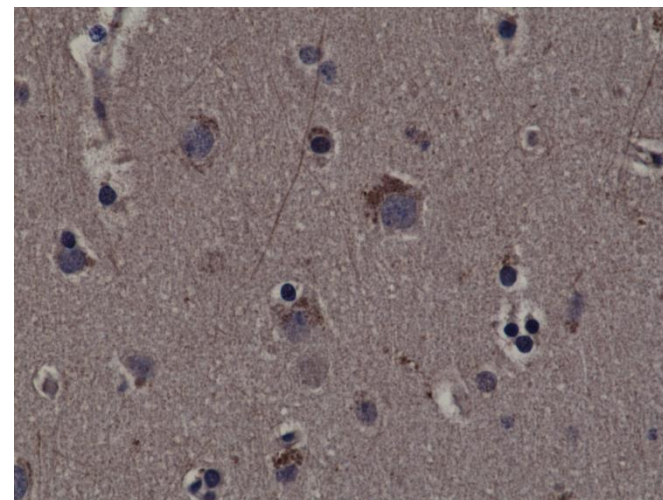


Certificate of Analysis

Product:	Rabbit Monoclonal Antibody Anti-phospho-Rsk1 (Thr359/Ser363) Rabbit Monoclonal Antibody, Clone RM233
Catalog No.:	31-1117-00
Lot No.:	
Clone:	RM233
Specificity:	This antibody reacts to human RSK1 only when phosphorylated at Thr359/Ser363.
Application:	Immunohistochemistry, Western Blot
Immunogen:	A phospho-peptide corresponding to human phospho-Rsk1 (Thr359/Ser363)
Purity:	Protein A affinity purified from an animal origin-free culture supernatant
Size:	100 µL
Buffer:	50% Glycerol/PBS with 1% BSA and 0.09% sodium azide
Usage:	WB: 1:1000 - 1:2000 dilution. IHC: 1:200 -1:500 dilution.
Storage and Stability:	Stable for 1 Year at -20.0°C from date of receipt.
Country of Origin:	U.S.A.
Intended Use:	For Research Use Only Not for Diagnostic or Therapeutic Use



Western Blot of A431 cells treated (+) or nontreated (-) with EGF, using Anti-phospho-Rsk1 (Thr359/Ser363) RM233 at a 1:1000 dilution, showed a band of phosphorylated Rsk1 only in EGF treated A431 cells .



Immunohistochemical staining of formalin fixed and paraffin embedded human cerebral cortex tissue sections using Anti-phospho-Rsk1 (Thr359/Ser363) RM233 at a 1:200 dilution.