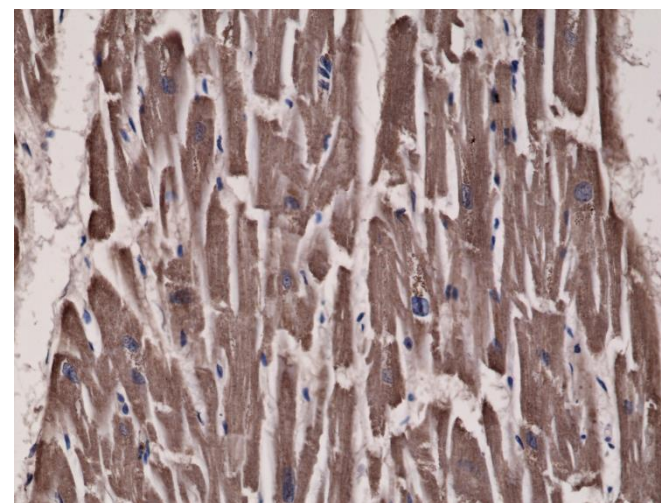
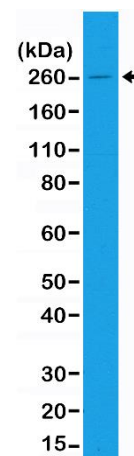


## Certificate of Analysis

<b>Product:</b>	Rabbit Monoclonal Antibody Anti-Acetyl CoA Carboxylase 1 Rabbit Monoclonal Antibody, Clone RM232
<b>Catalog No.:</b>	31-1116-00
<b>Lot No.:</b>	
<b>Clone:</b>	RM232
<b>Specificity:</b>	This antibody reacts to human Acetyl CoA Carboxylase 1. This antibody may also react to mouse or rat Acetyl CoA Carboxylase 1, as predicted by immunogen homology.
<b>Application:</b>	Immunohistochemistry, Western Blot
<b>Immunogen:</b>	A peptide corresponding to human Acetyl CoA Carboxylase 1.
<b>Purity:</b>	Protein A affinity purified from an animal origin-free culture supernatant
<b>Size:</b>	100 µL
<b>Buffer:</b>	50% Glycerol/PBS with 1% BSA and 0.09% sodium azide
<b>Usage:</b>	IHC: 1:300 -1:500 dilution; WB: 1:1000 - 1:2000 dilution.
<b>Storage and Stability:</b>	Stable for 1 Year at -20.0°C from date of receipt.
<b>Country of Origin:</b>	U.S.A.
<b>Intended Use:</b>	<b>For Research Use Only Not for Diagnostic or Therapeutic Use</b>



Immunohistochemical staining of formalin fixed and paraffin embedded human heart tissue sections using Anti-Acetyl CoA Carboxylase 1 RM232 at a 1:300 dilution.



Western Blot of A431 cell lysates using Anti-Acetyl CoA Carboxylase 1 (RM232) at a 1:1,000 dilution, showed a band of Acetyl CoA Carboxylase 1 (~260 kDa) expressed in A431 cells.