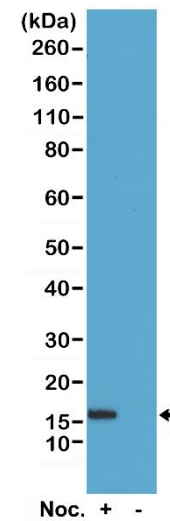
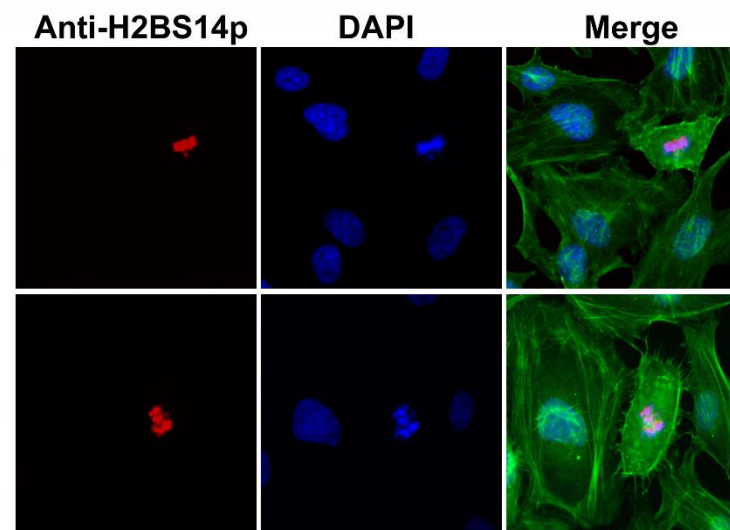


Certificate of Analysis

Product:	Rabbit Monoclonal Antibody Anti-Phospho-Histone H2B (Ser14) Rabbit Monoclonal Antibody, Clone RM238
Catalog No.:	31-1115-00
Lot No.:	
Clone	RM238
Specificity	This antibody reacts to Histone H2B only when phosphorylated at serine 14. No cross reactivity with other phosphorylated histones.
Application:	Western Blot, Immunocytochemistry, ELISA, Multiplex
Immunogen:	A phospho-peptide corresponding to Phospho-Histone H2B (Ser14).
Purity:	Protein A affinity purified from an animal origin-free culture supernatant
Size:	100 µg
Concentration:	1.0 mg/mL
Buffer:	50% Glycerol/PBS with 1% BSA and 0.09% sodium azide
Usage:	WB: 0.5 µg/mL - 2 µg/mL; ICC: 1 µg/mL - 2 µg/mL; ELISA: 0.2 µg/mL - 1 µg/mL; Multiplex: 0.1 µg/mL - 1 µg/mL.
Storage and Stability:	Stable for 1 Year at -20.0°C from date of receipt.
Country of Origin:	U.S.A.
Intended Use:	For Research Use Only Not for Diagnostic or Therapeutic Use



Western Blot of acid extracts of HeLa cells treated or non-treated with Nocodazole. Using RM238 at 0.5 µg/mL, showed a band of Histone H2B phosphorylated at Serine 14 in HeLa cells.



Immunocytochemistry of HeLa cells using Anti-Phospho-Histone H2B (Ser14) Rabbit mAb RM238 (red) and DAPI (blue). Actin filaments have been labeled with fluorescein phalloidin (green).