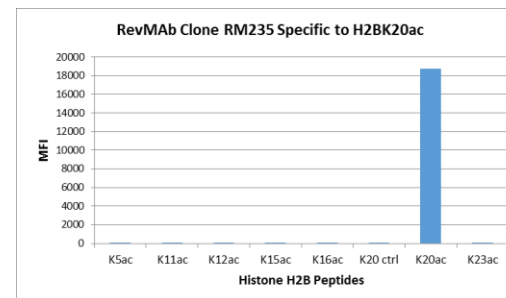
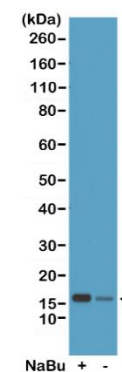


Certificate of Analysis

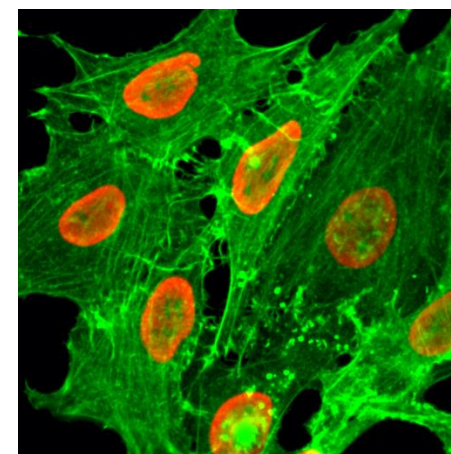
| | |
|-------------------------------|--|
| Product: | Rabbit Monoclonal Antibody Anti-Acetyl-Histone H2B (Lys20) Rabbit Monoclonal Antibody, Clone RM235 |
| Catalog No.: | 31-1113-00 |
| Lot No.: | |
| Clone | RM235 |
| Specificity | This antibody reacts to Histone H2B acetylated at Lysine 20 (K20ac). No cross reactivity with non-modified Lysine 20 or other acetylated Lysines in histone H2B. |
| Application: | Western Blot, Immunocytochemistry, ELISA, Multiplex |
| Immunogen: | An acetyl-peptide corresponding to Acetyl-Histone H2B (Lys20). |
| Purity: | Protein A affinity purified from an animal origin-free culture supernatant |
| Size: | 100 µg |
| Concentration: | 1.0 mg/mL |
| Buffer: | 50% Glycerol/PBS with 1% BSA and 0.09% sodium azide |
| Usage: | WB: 0.5 µg/mL - 2 µg/mL; ICC: 1 µg/mL - 2 µg/mL; ELISA: 0.2 µg/mL - 1 µg/mL; Multiplex: 0.1 µg/mL – 0.5 µg/mL. |
| Storage and Stability: | Stable for 1 Year at -20.0°C from date of receipt. |
| Country of Origin: | U.S.A. |
| Intended Use: | For Research Use Only Not for Diagnostic or Therapeutic Use |



RM235 specifically reacts to Histone H2B acetylated at Lysine 20 (K20ac). No cross reactivity with non-modified Lysine 20 or other acetylated Lysines in histone H2B.



Western Blot of acid extracts from HeLa cells treated (+) or untreated (-) with sodium butyrate, using anti-Acetyl-Histone H2B (Lys20) Rabbit Monoclonal Antibody (Clone RM235) at 0.5 µg/mL.



Immunocytochemical staining of HeLa cells treated with sodium butyrate, using anti-Acetyl-Histone H2B (Lys20) Rabbit Monoclonal Antibody (Clone RM235) (red). Actin filaments have been labeled with fluorescein phalloidin (green).