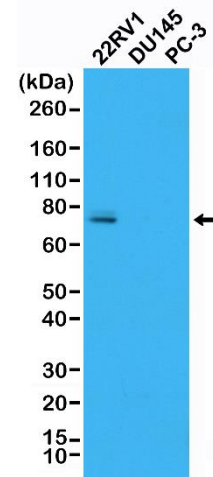
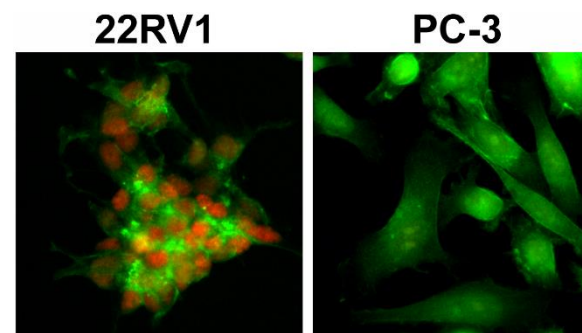


Certificate of Analysis

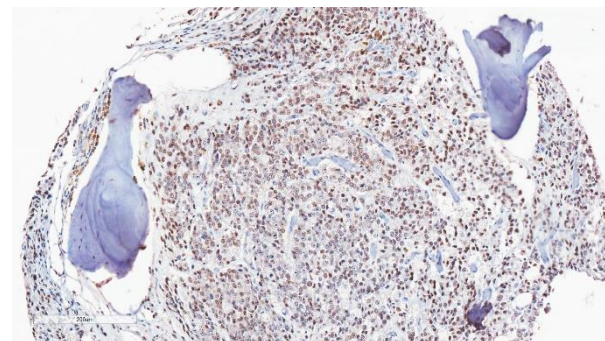
Product:	Rabbit Monoclonal Antibody Anti-Androgen Receptor (AR-V7 specific) Rabbit Monoclonal Antibody, Clone RM7
Catalog No.:	31-1109-00
Lot No.:	
Clone:	RM7
Specificity:	This antibody reacts to androgen receptor splice variant 7 (AR-V7). No cross reactivity with wild type androgen receptor.
Application:	Immunohistochemistry, Immunocytochemistry, Immunoprecipitation, Western Blot, Chromatin IP
Immunogen:	A peptide corresponding to AR splice variant 7
Purity:	Protein A affinity purified from an animal origin-free culture supernatant.
Size:	100 µL
Buffer:	50% Glycerol/PBS with 1% BSA and 0.09% sodium azide
Usage:	IHC: 1:500 dilution; ICC: 1:500 dilution; WB: 1:1000 dilution.
Storage and Stability:	Stable for 1 Year at -20.0°C from date of receipt.
Country of Origin:	U.S.A.
Intended Use:	For Research Use Only Not for Diagnostic or Therapeutic Use



Western Blot analysis of 22RV1, DU145, and PC-3 whole cell lysates, using anti-AR-V7 rabbit monoclonal Antibody Clone RM7, showed endogenous AR-V7 expressed in 22RV1 cells.



Immunocytochemical staining of 22RV1 and PC-3 cells, using anti-AR-V7 rabbit monoclonal Antibody Clone RM7 (red). Actin filaments have been labeled with fluorescein phalloidin (green).



Immunohistochemical staining of formalin fixed and paraffin metastasis prostate cancer. Clinically validated to be positive for ARv7. (Image is provided by Dr. Stephen Plymate, University of Washington, USA)