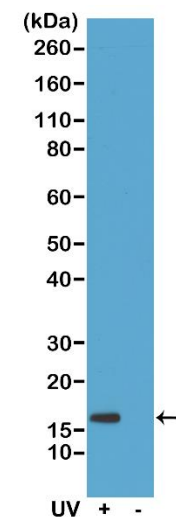
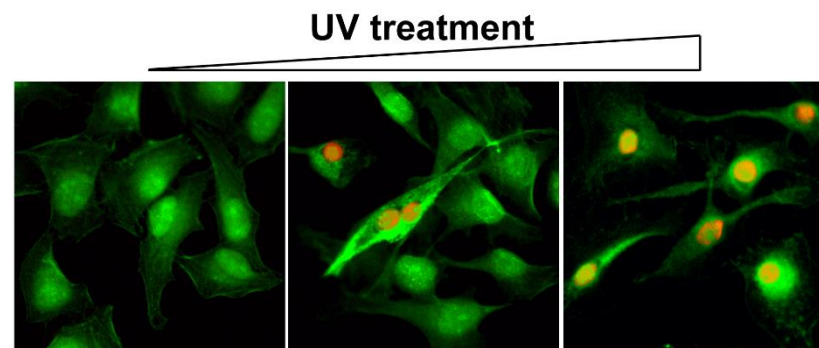


Certificate of Analysis

Product:	Rabbit Monoclonal Antibody Anti-Gamma H2AX (phospho-Ser139) Rabbit Monoclonal Antibody, Clone RM224
Catalog No.:	31-1104-00
Lot No.:	
Clone	RM224
Specificity	This antibody reacts to Histone H2A.X only when phosphorylated at serine 139. No cross reactivity with other phosphorylated histones.
Application:	Western Blot, Immunocytochemistry, ELISA, Multiplex
Immunogen:	A phospho-peptide corresponding to Phospho-Histone H2AX (Ser139).
Purity:	Protein A affinity purified from an animal origin-free culture supernatant
Size:	100 µg
Concentration:	1.0 mg/mL
Buffer:	50% Glycerol/PBS with 1% BSA and 0.09% sodium azide
Usage:	WB: 0.5 µg/mL - 2 µg/mL; ICC: 0.5 µg/mL - 2 µg/mL; ELISA: 0.2 µg/mL - 1 µg/mL; Multiplex: 0.1 µg/mL – 1 µg/mL.
Storage and Stability:	Stable for 1 Year at -20.0°C from date of receipt.
Country of Origin:	U.S.A.
Intended Use:	For Research Use Only Not for Diagnostic or Therapeutic Use



Western Blot of acid extracts of HeLa cells treated or non-treated with UV. Using RM224 at 0.5 µg/mL, showed a band of Histone H2A.X phosphorylated at serine 139 in HeLa cells.



Immunocytochemistry of HeLa cells using gamma H2AX Rabbit mAb RM224 (red). Actin filaments have been labeled with fluorescein phalloidin (green).