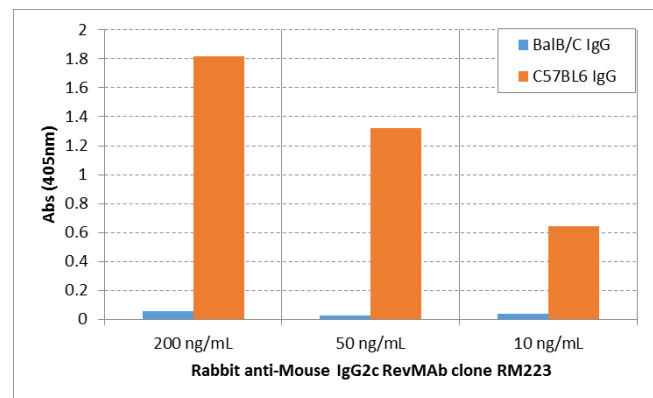
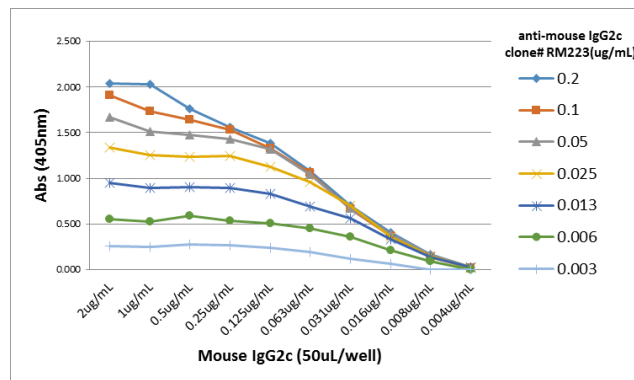


Certificate of Analysis

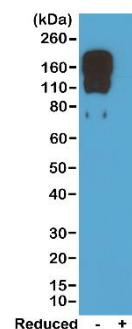
Product:	Rabbit Monoclonal Antibody Biotin Anti-Mouse IgG2c Rabbit Monoclonal Antibody, Clone RM223
Catalog No.:	31-1103-02
Lot No.:	
Clone	RM223
Specificity	This antibody reacts to the Fc region of mouse IgG2c. No cross reactivity with mouse IgG1, IgG2a, IgG2b, IgG3, IgM, IgA, IgE, human IgG, or rat IgG.
Application:	ELISA, Flow Cytometry, Immunoprecipitation, Western Blot (non-reduced).
Immunogen:	Mouse IgG2c
Purity:	Protein A affinity purified from an animal origin-free and protein-free culture supernatant
Size:	50 µg
Concentration:	1.0 mg/mL
Buffer:	50% Glycerol/PBS with 1% BSA and 0.09% sodium azide
Usage:	ELISA: 0.01ug/mL – 0.2ug/mL; WB(non-reduced): 0.5ug/mL – 2ug/mL
Storage and Stability:	Stable for 1 Year at -20.0°C from date of receipt.
Country of Origin:	U.S.A.
Intended Use:	For Research Use Only Not for Diagnostic or Therapeutic Use



ELISA of IgG from BalB/C and C57BL6 shows RM223 reacts to C57BL6 IgG containing IgG2c, and does not react to BalB/C IgG containing IgG2a. 200 ng/mL, 50 ng/mL, or 10 ng/mL of RM223 was used as the primary antibody. An alkaline phosphatase conjugated anti-rabbit IgG as the secondary antibody.



A titer ELISA of mouse IgG2c. The plate was coated with different amounts of mouse IgG2c. A serial dilution of RM223 was used as the primary antibody. An alkaline phosphatase conjugated anti-rabbit IgG as the secondary antibody.



Western blot of nonreduced(-) and reduced(+) mouse IgG2c, using 0.5ug/mL of RevMAB clone RM223. This antibody reacts to nonreduced IgG2c.