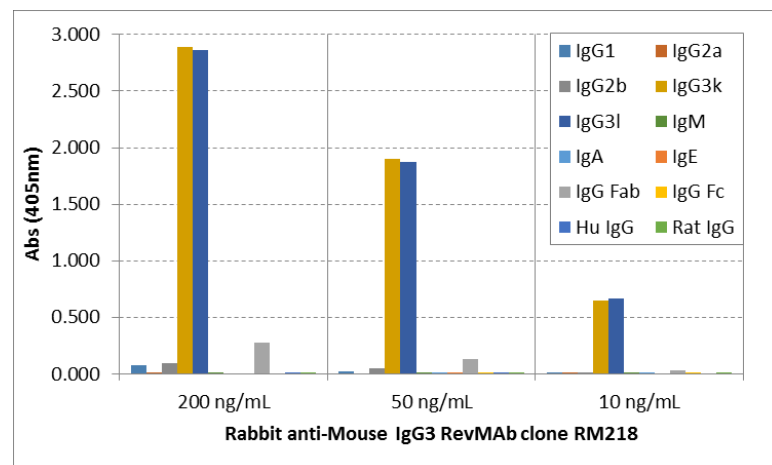
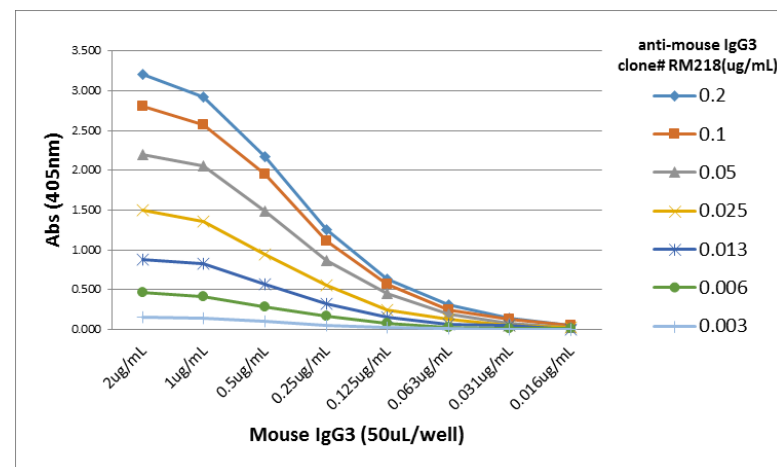


Certificate of Analysis

Product:	Rabbit Monoclonal Antibody Biotin Anti-Mouse IgG3 Rabbit Monoclonal Antibody, Clone RM218
Catalog No.:	31-1094-02
Lot No.:	
Clone	RM218
Specificity	This antibody reacts to the Fab region of mouse IgG3. No cross reactivity with mouse IgG1, IgG2a, IgG2b, IgM, IgA, IgE, human IgG, or rat IgG.
Application:	ELISA, Flow Cytometry, Immunoprecipitation, Western Blot.
Immunogen:	Mouse IgG3
Purity:	Protein A affinity purified from an animal origin-free and protein-free culture supernatant
Size:	50 µg
Concentration:	1.0 mg/mL
Buffer:	50% Glycerol/PBS with 1% BSA and 0.09% sodium azide
Usage:	ELISA: 0.005ug/mL – 0.2ug/mL; WB: 0.1ug/mL – 0.5ug/mL
Storage and Stability:	Stable for 1 Year at -20.0°C from date of receipt.
Country of Origin:	U.S.A.
Intended Use:	For Research Use Only Not for Diagnostic or Therapeutic Use



ELISA of mouse immunoglobulins shows RM218 reacts to both mouse IgG3κ and IgG3λ; No cross reactivity with mouse IgG1, IgG2a, IgG2b, IgM, IgA, IgE, human IgG, or rat IgG. The plate was coated with 50 ng/well of different immunoglobulins. 200 ng/mL, 50 ng/mL, or 10 ng/mL of RM218 was used as the primary antibody. An alkaline phosphatase conjugated anti-rabbit IgG as the secondary antibody.



A titer ELISA of mouse IgG3. The plate was coated with different amounts of mouse IgG3. A serial dilution of RM218 was used as the primary antibody. An alkaline phosphatase conjugated anti-rabbit IgG as the secondary antibody.