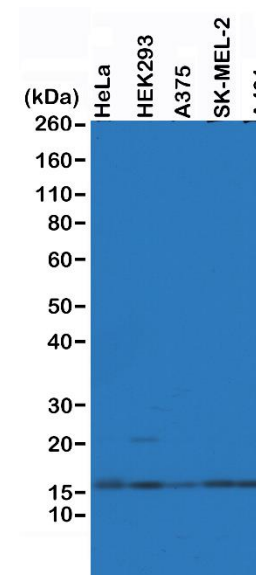
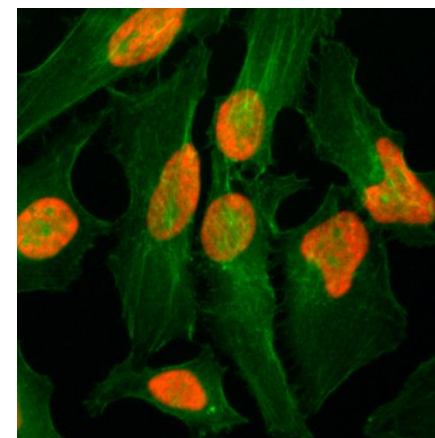


## Certificate of Analysis

<b>Product:</b>	Rabbit Monoclonal Antibody Anti-Histone H2AZ Rabbit Monoclonal Antibody, Clone RM215
<b>Catalog No.:</b>	31-1091-00
<b>Lot No.:</b>	
<b>Clone</b>	RM215
<b>Specificity</b>	This antibody reacts to Histone H2AZ protein, independent of post-translational modifications. No cross reactivity with other histone proteins.
<b>Application:</b>	Western Blot, Immunocytochemistry, ELISA, Multiplex
<b>Immunogen:</b>	A peptide corresponding to the C-terminus of human Histone H2AZ.
<b>Purity:</b>	Protein A affinity purified from an animal origin-free culture supernatant
<b>Size:</b>	100 µg
<b>Concentration:</b>	1.0 mg/mL
<b>Buffer:</b>	50% Glycerol/PBS with 1% BSA and 0.09% sodium azide
<b>Usage:</b>	WB: 0.1 µg/mL – 0.5 µg/mL; ICC: 1 µg/mL - 2 µg/mL; ELISA: 0.1 µg/mL - 1 µg/mL; Multiplex: 0.1 µg/mL – 1 µg/mL.
<b>Storage and Stability:</b>	Stable for 1 Year at -20.0°C from date of receipt.
<b>Country of Origin:</b>	U.S.A.
<b>Intended Use:</b>	<b>For Research Use Only Not for Diagnostic or Therapeutic Use</b>



Western Blot of HeLa, HEK293, A375, SK-MEL-2 and A431 whole cell lysates, using RM215 at 0.5 µg/mL, showed endogenous Histone H2AZ in HeLa, HEK293, A375, SK-MEL-2 and A431 cells.



Immunocytochemistry of HeLa cells, using Histone H2AZ Rabbit mAb RM215 (red). Actin filaments have been labeled with fluorescein phalloidin (green).