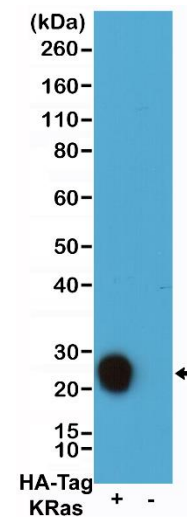
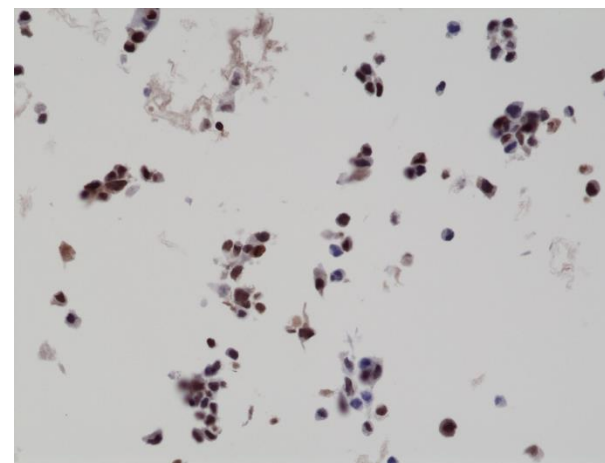


## Product Datasheet

<b>Product:</b>	Rabbit Monoclonal Antibody Anti-HA-Tag Rabbit Monoclonal Antibody, Clone RM305
<b>Catalog No.:</b>	31-1190-00
<b>Clone</b>	RM305
<b>Specificity</b>	This antibody reacts to recombinant proteins containing a HA-Tag fused to either the amino or carboxy terminus. No cross reactivity with other endogenous protein.
<b>Application:</b>	Western Blot, Immunoprecipitation, Immunocytochemistry, Flow Cytometry, Immunohistochemistry
<b>Immunogen:</b>	A peptide corresponding to HA-tag (Human influenza hemagglutinin amino acids 98-106)
<b>Purity:</b>	Protein A affinity purified from an animal origin-free culture supernatant.
<b>Size:</b>	100 ug
<b>Concentration:</b>	1.0 mg/mL
<b>Buffer:</b>	50% Glycerol/PBS with 1% BSA and 0.09% sodium azide
<b>Usage:</b>	WB: 0.1 µg/mL – 1 µg/mL; IP: 0.5 µg/mL – 2 µg/mL; ICC, FC: 0.1 µg/mL – 1 µg/mL; IHC: 0.01 µg/mL – 0.5 µg/mL.
<b>Storage and Stability:</b>	Stable for 1 Year at -20.0°C from date of receipt.
<b>Country of Origin:</b>	U.S.A.
<b>Intended Use:</b>	<b>For Research Use Only Not for Diagnostic or Therapeutic Use</b>



Western blot of 293T cells transfected (+) or non-transfected (-) with a DNA construct encoding HA-Tag KRas fusion protein, using anti-HA-tag rabbit monoclonal antibody (clone RM305) at 0.1 µg/mL.



Immunohistochemical staining of formalin fixed and paraffin embedded LNCaP cells overexpressing HA-tag Bag1 protein, using anti-HA-tag rabbit monoclonal antibody (clone RM305) at 0.01 µg/mL.