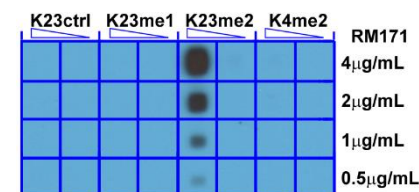
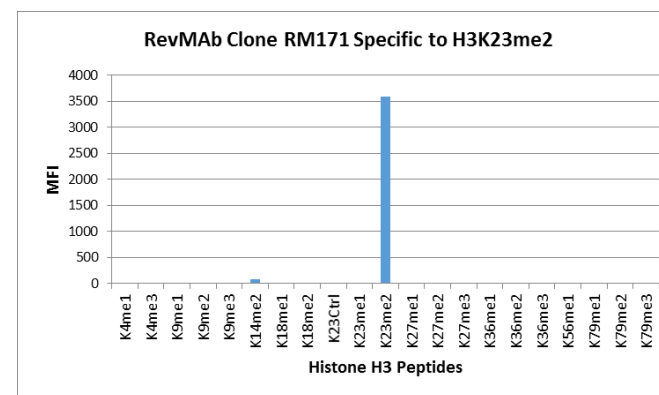


Certificate of Analysis

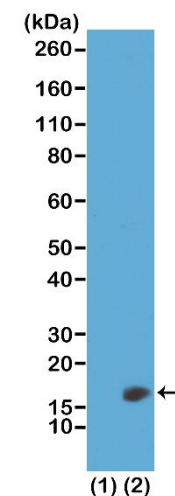
Product:	Rabbit Monoclonal Antibody Anti-Dimethyl-Histone H3 (Lys23) Rabbit Monoclonal Antibody, Clone RM171
Catalog No.:	31-1077-00
Lot No.:	
Clone	RM171
Specificity	This antibody reacts to Histone H3 dimethylated at Lysine 23 (K23me2). No cross reactivity with nonmodified Lysine 23, monomethylated Lysine 23 (K23me1), or other methylations in histone H3.
Application:	Western Blot, ELISA, Multiplex
Immunogen:	A dimethyl-peptide corresponding to dimethyl-Histone H3 (Lys23).
Purity:	Protein A affinity purified from an animal origin-free culture supernatant
Size:	100 µg
Concentration:	1.0 mg/mL
Buffer:	50% Glycerol/PBS with 1% BSA and 0.09% sodium azide
Usage:	WB: 0.5 µg/mL – 2 µg/mL; ELISA: 0.1 µg/mL – 0.5 µg/mL; Multiplex: 0.1 µg/mL – 0.5 µg/mL.
Storage and Stability:	Stable for 1 Year at -20.0°C from date of receipt.
Country of Origin:	U.S.A.
Intended Use:	For Research Use Only Not for Diagnostic or Therapeutic Use



A Peptide dotblot shows RM171 reacts only to Histone H3 dimethyl-Lysine 23 (K23me2). No cross reactivity with nonmodified Lysine 23 (K23Ctrl), monomethylated Lysine 23 (K23me1), or dimethylated Lysine 4 (K4me2).



RM171 specifically reacts to Histone H3 dimethylated at Lysine 23 (K23me2). No cross reactivity with other methylated lysines in Histone H3.



Western Blot of recombinant histone H3.3 (1) and acid extracts of HeLa cells (2), using RM171 at 0.5 µg/mL, showed a band of histone H3 dimethylated at Lysine 23 (K23me2) in HeLa cells.