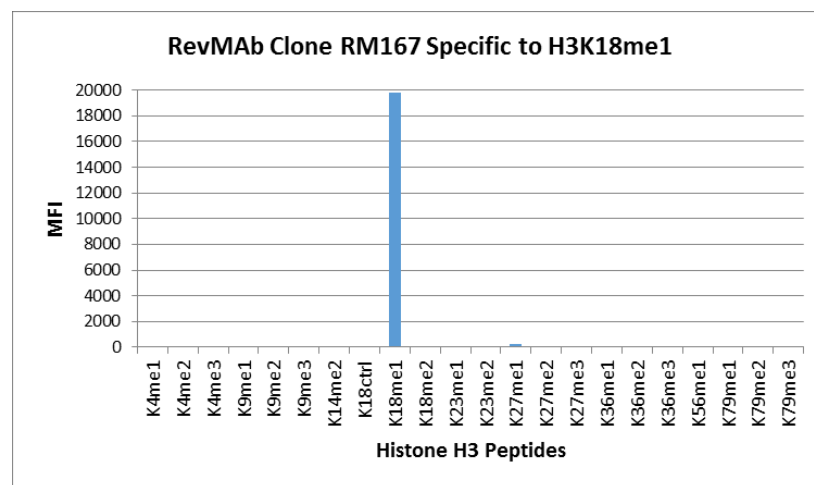
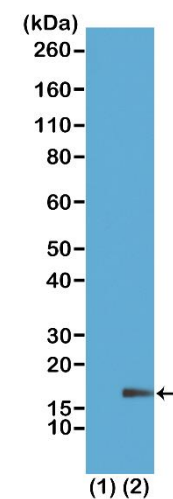


Certificate of Analysis

Product:	Rabbit Monoclonal Antibody Anti-Monomethyl-Histone H3 (Lys18) Rabbit Monoclonal Antibody, Clone RM167
Catalog No.:	31-1076-00
Lot No.:	
Clone	RM167
Specificity	This antibody reacts to Histone H3 monomethylated at Lysine 18 (K18me1). No cross reactivity with nonmodified Lysine 18 or dimethylated Lysine 18 (K18me2), or other methylations in histone H3.
Application:	Western Blot, ELISA, Multiplex
Immunogen:	A monomethyl-peptide corresponding to Monomethyl-Histone H3 (Lys18).
Purity:	Protein A affinity purified from an animal origin-free culture supernatant
Size:	100 µg
Concentration:	1.0 mg/mL
Buffer:	50% Glycerol/PBS with 1% BSA and 0.09% sodium azide
Usage:	WB: 1 µg/mL – 2 µg/mL; ELISA: 0.2 µg/mL - 1 µg/mL; Multiplex: 0.1 µg/mL – 0.5 µg/mL.
Storage and Stability:	Stable for 1 Year at -20.0°C from date of receipt.
Country of Origin:	U.S.A.
Intended Use:	For Research Use Only Not for Diagnostic or Therapeutic Use



RM167 specifically reacts to Histone H3 monomethylated at Lysine 18 (K18me1). No cross reactivity with nonmodified Lysine 18 (K18Ctrl) or dimethylated Lysine 18 (K18me2), or other methylations in histone H3.



Western Blot of recombinant histone H3.3 (1) and acid extracts of HeLa cells (2), using RM167 at 1 µg/mL, showed a band of histone H3 monomethylated at Lysine 18 (K18me1) in HeLa cells.