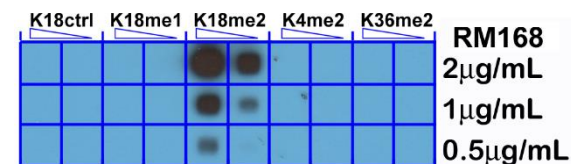
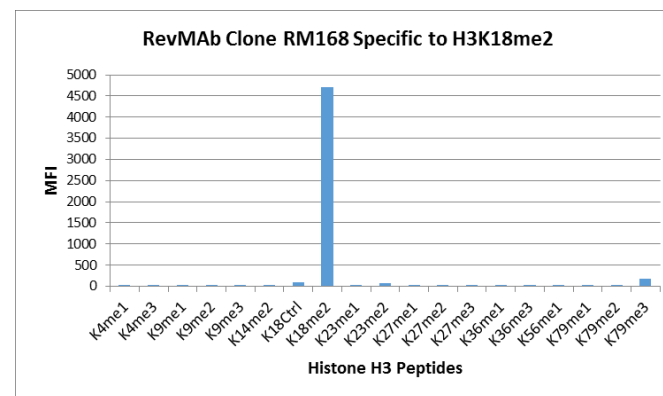


## Certificate of Analysis

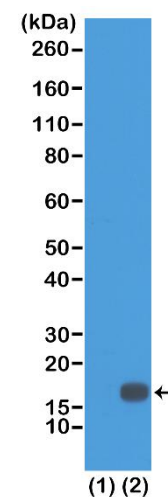
<b>Product:</b>	Rabbit Monoclonal Antibody Anti-Dimethyl-Histone H3 (Lys18) Rabbit Monoclonal Antibody, Clone RM168
<b>Catalog No.:</b>	31-1075-00
<b>Lot No.:</b>	
<b>Clone</b>	RM168
<b>Specificity</b>	This antibody reacts to Histone H3 dimethylated at Lysine 18 (K18me2). No cross reactivity with nonmodified Lysine 18, monomethylated Lysine 18 (K18me1), or other methylations in histone H3.
<b>Application:</b>	Western Blot, ELISA, Multiplex
<b>Immunogen:</b>	A dimethyl-peptide corresponding to dimethyl-Histone H3 (Lys18).
<b>Purity:</b>	Protein A affinity purified from an animal origin-free culture supernatant
<b>Size:</b>	25 µg
<b>Concentration:</b>	1.0 mg/mL
<b>Buffer:</b>	50% Glycerol/PBS with 1% BSA and 0.09% sodium azide
<b>Usage:</b>	WB: 0.2 µg/mL – 1 µg/mL; ELISA: 0.1 µg/mL – 0.5 µg/mL; Multiplex: 0.1 µg/mL – 0.5 µg/mL.
<b>Storage and Stability:</b>	Stable for 1 Year at -20.0°C from date of receipt.
<b>Country of Origin:</b>	U.S.A.
<b>Intended Use:</b>	<b>For Research Use Only Not for Diagnostic or Therapeutic Use</b>



A Peptide dotblot shows RM168 reacts only to Histone H3 dimethyl-Lysine 18 (K18me2). No cross reactivity with nonmodified Lysine 18 (K18Ctrl), monomethylated Lysine 18 (K18me1), dimethylated Lysine 4 (K4me2), or dimethylated Lysine 36 (K36me2).



RM168 specifically reacts to Histone H3 dimethylated at Lysine 18 (K18me2). No cross reactivity with other methylated lysines in Histone H3.



Western Blot of recombinant histone H3.3 (1) and acid extracts of HeLa cells (2), using RM168 at 0.5 µg/mL, showed a band of histone H3 dimethylated at Lysine 18 (K18me2) in HeLa cells.