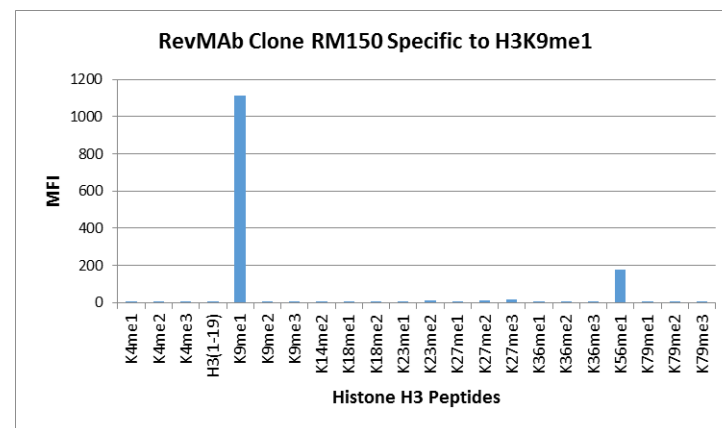
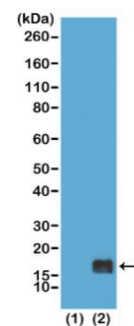


Certificate of Analysis

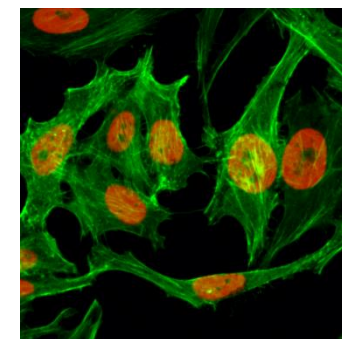
Product:	Rabbit Monoclonal Antibody Anti-Monomethyl-Histone H3 (Lys9) Rabbit Monoclonal Antibody, Clone RM150
Catalog No.:	31-1064-00
Lot No.:	
Clone	RM150
Specificity	This antibody reacts to Histone H3 monomethylated at Lysine 9 (K9me1). No cross reactivity with non-modified Lysine 9, dimethylated Lysine 9 (K9me2), trimethylated Lysine 4 (K9me3), or other methylations in histone H3.
Application:	Western Blot, Chromatin IP, Immunocytochemistry, ELISA, Multiplex
Immunogen:	A monomethyl-peptide corresponding to Monomethyl-Histone H3 (Lys9).
Purity:	Protein A affinity purified from an animal origin-free culture supernatant
Size:	100 µg
Concentration:	1.0 mg/mL
Buffer:	50% Glycerol/PBS with 1% BSA and 0.09% sodium azide
Usage:	WB: 0.5 µg/mL – 2 µg/mL; ChIP: 2 µg/mL - 10 µg/mL; ICC: 0.5 µg/mL - 2 µg/mL; ELISA: 0.5 µg/mL - 2 µg/mL; Multiplex: 0.1 µg/mL – 0.5 µg/mL.
Storage and Stability:	Stable for 1 Year at -20.0°C from date of receipt.
Country of Origin:	U.S.A.
Intended Use:	For Research Use Only Not for Diagnostic or Therapeutic Use



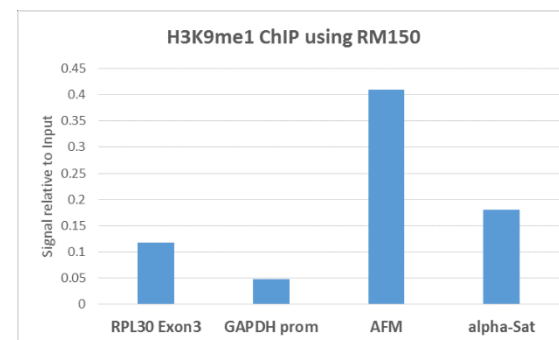
RM150 specifically reacts to Histone H3 monomethylated at Lysine 9 (K9me1). No cross reactivity with non-modified Lysine 9, dimethylated Lysine 9 (K9me2), trimethylated Lysine 4 (K9me3), or other methylations in histone H3.



Western Blot of recombinant histone H3.3 (1) and acid extracts of HeLa cells (2), using RM150 at 0.5 µg/mL, showed a band of histone H3 monomethylated at Lysine 9 (K4me1) in HeLa cells.



Immunocytochemistry of HeLa cells, using monomethyl-Histone H3 (Lys9) Rabbit mAb RM150 (red). Actin filaments have been labeled with fluorescein phalloidin (green).



ChIP performed on HeLa cells using H3K9me1 antibody (RM150, 5µg). Real-time PCR was performed using primers specific to the gene indicated.

