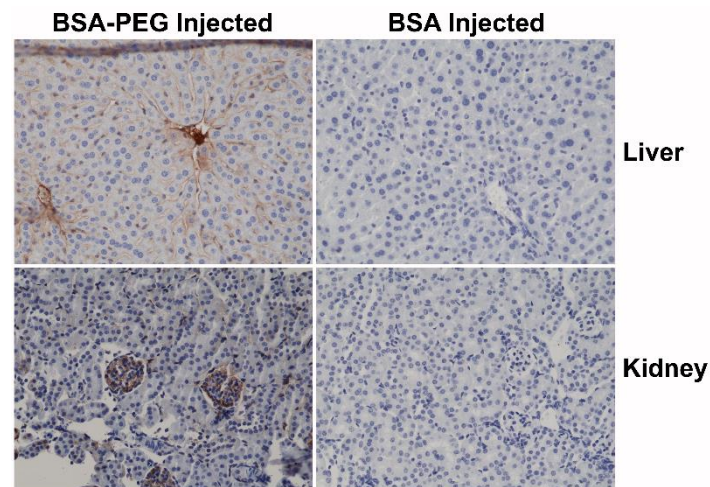
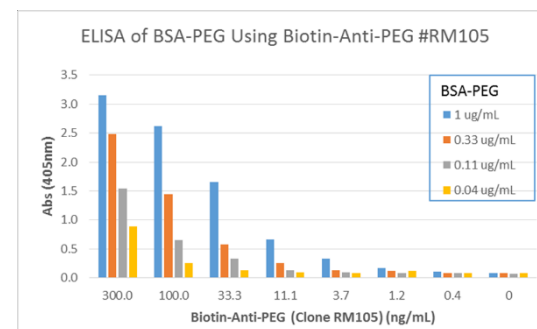


Certificate of Analysis

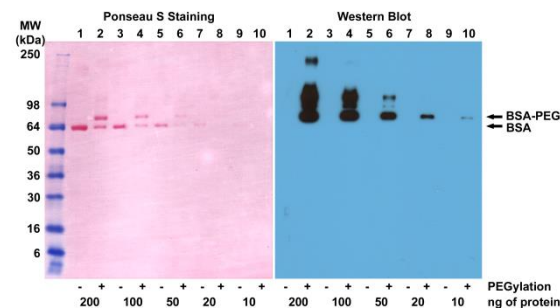
Product:	Rabbit Monoclonal Antibody Biotin Anti-PEG (methoxy group) Rabbit Monoclonal Antibody, Clone RM105
Catalog No.:	31-1008-02
Lot No.:	
Clone	RM105
Specificity	This antibody reacts to the methoxy group of Polyethylene glycol (PEG). It is specific for methoxypolyethylene glycol.
Application:	ELISA, Immunohistochemistry, Immunocytochemistry, Western Blot, Immunoprecipitation, Flow Cytometry,
Immunogen:	KLH-PEG with terminal methoxy group
Purity:	Protein A affinity purified from an animal origin-free and protein-free culture supernatant
Size:	50 µg
Concentration:	1.0 mg/mL
Buffer:	50% Glycerol/PBS with 1% BSA and 0.09% sodium azide
Usage:	ELISA: 0.02µg/mL – 0.5µg/mL IHC: 0.5µg/mL – 2µg/mL WB: 0.1µg/mL – 1µg/mL
Storage and Stability:	Stable for 1 Year at -20.0°C from date of receipt.
Country of Origin:	U.S.A.
Intended Use:	For Research Use Only Not for Diagnostic or Therapeutic Use



Immunohistochemistry of mouse liver and kidney using 0.5µg/mL of RevMAB anti-PEG Clone RM105 biotin conjugate, followed by an HRP conjugated streptavidin. The mouse was injected with PEG-BSA or BSA 3 hours before sampling.



ELISA of PEGylated BSA using Biotinylated anti-PEG rabbit monoclonal antibody clone RM105. The ELISA plate was coated with 50 µL/well of BSA-PEG at 1 ug/mL, 0.33 ug/mL, 0.11 ug/mL, and 0.04 ug/mL. Different concentrations of Biotinylated anti-PEG mAb clone RM105 was used as the primary antibody, followed by an AP conjugated Streptavidin.



Western blot of BSA and PEGylated BSA (mPEG 5 kDa) using 0.1µg/mL of anti-PEG RevMAB clone RM105.