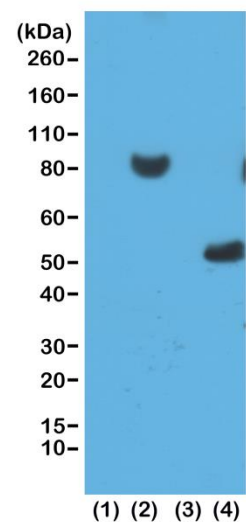
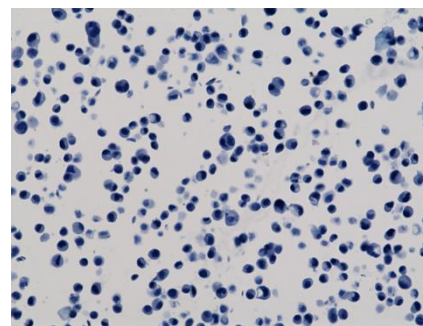


Certificate of Analysis

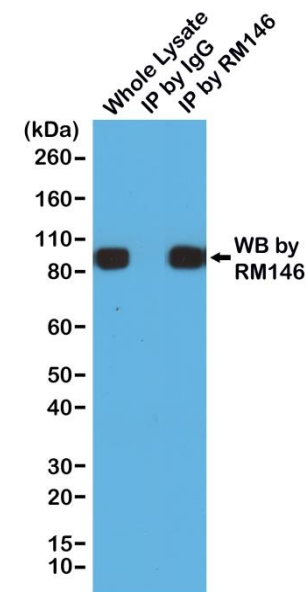
Product:	Rabbit Monoclonal Antibody Anti-His-Tag Rabbit Monoclonal Antibody, Clone RM146
Catalog No.:	31-1048-00
Lot No:	
Clone	RM146
Specificity	This antibody reacts to recombinant proteins containing the 6xHis-Tag or 10xHis-Tag fused to either the amino or carboxy terminus. No cross reactivity with other endogenous protein in mammalian or bacteria cells.
Application:	Western Blot, Immunoprecipitation, Immunocytochemistry, Flow Cytometry, Immunohistochemistry
Immunogen:	Mixture of a peptide with 6xHis-Tag at the N-terminus and another peptide with 6xHis-Tag at the C-terminus.
Purity:	Protein A affinity purified from an animal origin-free culture supernatant.
Size:	100 µg
Concentration:	1.0 mg/mL
Buffer:	50% Glycerol/PBS with 1% BSA and 0.09% sodium azide
Usage:	WB: 0.1 µg/mL – 1 µg/mL; IP: 0.5 µg/mL – 2 µg/mL; ICC, FC: 0.5 µg/mL – 2 µg/mL; IHC: 0.1 µg/mL – 1 µg/mL.
Storage and Stability:	Stable for 1 Year at -20.0°C from date of receipt.
Country of Origin:	U.S.A.
Intended Use:	For Research Use Only Not for Diagnostic or Therapeutic Use



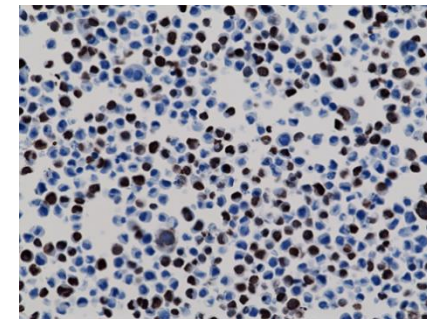
Western blot of 293T cells (1) untransfected or (2) transfected with His-Tag fusion protein X and (3) E. coli lysate without His-Tag Protein Y (4) E. coli lysate with His-Tag Protein Y, using RevMAB Clone RM146 at 0.2 µg/mL.



Immunohistochemistry staining of naïve HepG2 cells (Negative control) using anti-His-Tag antibody, RM146.



Immunoprecipitation of 293T cells expressing a His-Tag fusion protein by RevMAB clone RM146, was blotted with RM146. (1) Whole lysate control; (2) IP by rabbit IgG control; (3) IP by RM146.



Immunohistochemistry staining of 293T cells expressing His-Tag nuclear protein X, using anti-His-Tag antibody, RM146.