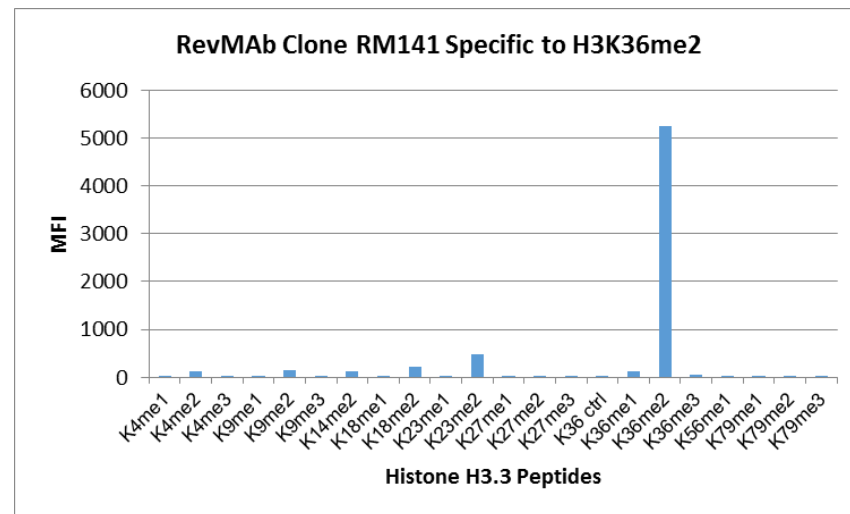
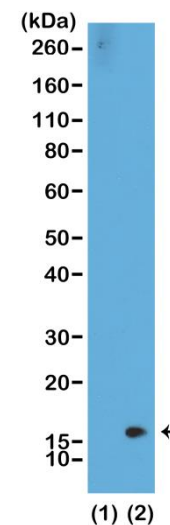


Certificate of Analysis

Product:	Rabbit Monoclonal Antibody Anti-Dimethyl-Histone H3 (Lys36) Rabbit Monoclonal Antibody, Clone RM141
Catalog No.:	31-1047-00
Lot No.:	
Clone	RM141
Specificity	This antibody reacts to Histone H3 dimethylated at Lysine 36 (K36me2). No cross reactivity with monomethylated Lysine 36 (K36me1), trimethylated Lysine 36 (K36me3), or other methylations in histone H3.
Application:	Western Blot, ELISA, Multiplex
Immunogen:	A dimethyl-peptide corresponding to Dimethyl-Histone H3 (Lys36).
Purity:	Protein A affinity purified from an animal origin-free culture supernatant
Size:	100 µg
Concentration:	1.0 mg/mL
Buffer:	50% Glycerol/PBS with 1% BSA and 0.09% sodium azide
Usage:	WB: 0.5 µg/mL – 2 µg/mL; ELISA: 0.2 µg/mL - 1 µg/mL; Multiplex: 0.1 µg/mL – 0.5 µg/mL.
Storage and Stability:	Stable for 1 Year at -20.0°C from date of receipt.
Country of Origin:	U.S.A.
Intended Use:	For Research Use Only Not for Diagnostic or Therapeutic Use



RM141 specifically reacts to Histone H3 dimethylated at Lysine 36 (K36me2). No cross reactivity with non-modified Lysine 36 (K36 Ctrl), monomethylated Lysine 36 (K36me1), trimethylated Lysine 36 (K36me3), or other methylations in Histone H3.



Western Blot of recombinant histone H3.3 (1) and acid extracts of HeLa cells (2), using RM141 at 0.5 µg/mL, showed a band of histone H3 dimethylated at Lysine 36 (K36me2) in HeLa cells.