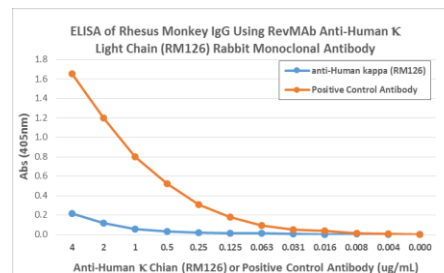
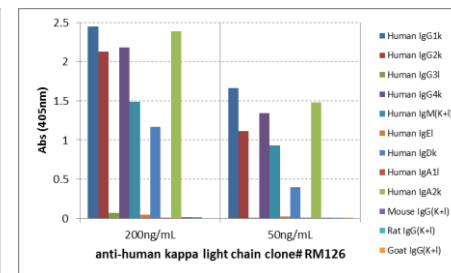


Certificate of Analysis

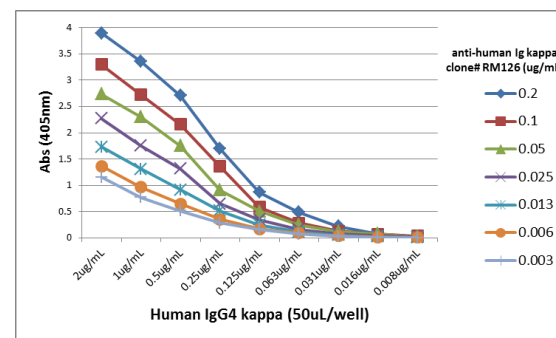
Product:	Rabbit Monoclonal Antibody Anti-Human Kappa Light Chain Rabbit Monoclonal Antibody, Clone RM126
Catalog No.:	31-1028-00
Lot No:	
Clone	RM126
Specificity	This antibody reacts to the kappa light chain of human immunoglobulins, and does not react to the lambda light chain. RM126 does not react to monkey (Cyno or Rhesus) IgG, mouse IgG, rat IgG, or goat IgG.
Application:	ELISA, Immunohistochemistry, Immunocytochemistry, Flow Cytometry.
Immunogen:	Human IgG
Purity:	Protein A affinity purified from an animal origin-free culture supernatant
Size:	100 µg
Concentration:	1.0 mg/mL
Buffer:	50% Glycerol/PBS with 1% BSA and 0.09% sodium azide
Usage:	ELISA: 0.05ug/mL – 0.2ug/mL; IHC, ICC: 0.5ug/mL – 2ug/mL.
Storage and Stability:	Stable for 1 Year at -20.0°C from date of receipt.
Country of Origin:	U.S.A.
Intended Use:	For Research Use Only Not for Diagnostic or Therapeutic Use



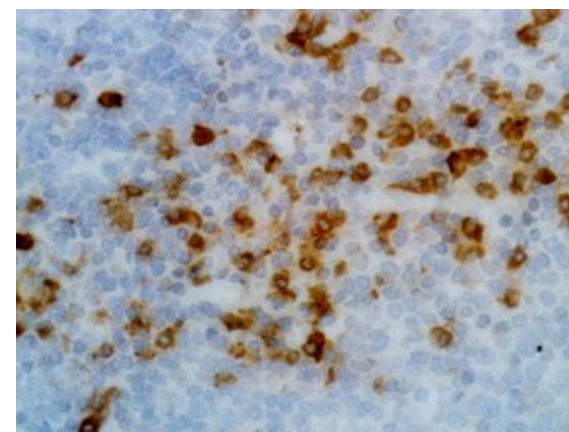
ELISA showing RM126 does not react to monkey IgG. The plate was coated with Rhesus monkey IgG. A serial dilution of RM126 and a monkey IgG binding antibody (positive control) was used as the detection antibody.



ELISA showing RM126 reacts only to the kappa light chain of human immunoglobulins, and not to lambda light chain, mouse IgG, rat IgG, or goat IgG.



A titer ELISA using RM126. The plate was coated with different amounts of human IgG4κ. A serial dilution of RM126 was used as the primary antibody, followed by an alkaline phosphatase conjugated anti-rabbit IgG as the secondary antibody.



Immunohistochemical staining of formalin fixed and paraffin embedded human tonsil tissue section using anti-human Ig kappa light chain rabbit monoclonal antibody (Clone RM126).