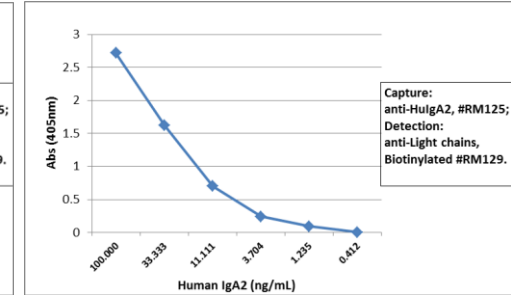
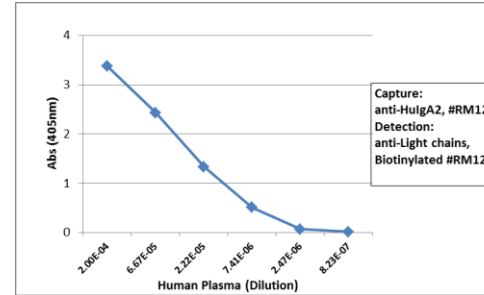
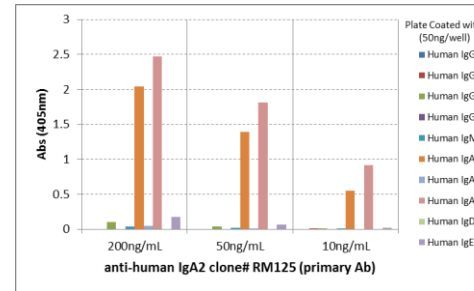


Certificate of Analysis

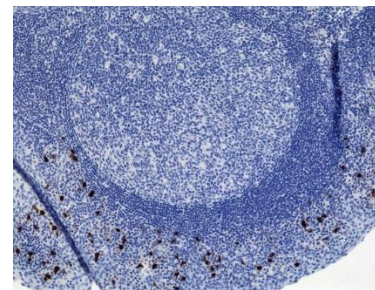
Product:	Rabbit Monoclonal Antibody Biotin Anti-Human IgA2 Rabbit Monoclonal Antibody, Clone RM125
Catalog No.:	31-1027-02
Lot No.:	
Clone	RM125
Specificity	This antibody reacts to human IgA2. No cross reactivity with human IgA1, IgG, IgM, IgD, or IgE.
Application:	ELISA, Immunohistochemistry, Immunocytochemistry
Immunogen:	Human IgA2
Purity:	Protein A affinity purified from an animal origin-free culture supernatant
Size:	50 µg
Concentration:	1.0 mg/mL
Buffer:	50% Glycerol/PBS with 1% BSA and 0.09% sodium azide
Usage:	ELISA: 50ng/well – 200ng/well (for Capture); 0.05ug/mL – 0.2ug/mL (for Detection); ICC: 0.5ug/mL-2ug/mL; IHC: 0.1ug/mL – 1ug/mL
Storage and Stability:	Stable for 1 Year at -20.0°C from date of receipt.
Country of Origin:	U.S.A.
Intended Use:	For Research Use Only Not for Diagnostic or Therapeutic Use



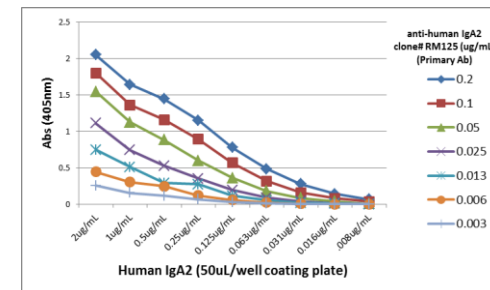
Sandwich ELISA using RM125 as the capture antibody (100ng/well), and Biotinylated anti-human light chains ($\kappa+\lambda$) antibody RM129 as the detection antibody, followed by an alkaline phosphatase conjugated streptavidin.



ELISA of human immunoglobulins shows RM125 only reacts to human IgA2. No cross reactivity with human IgA1, IgG, IgM, IgD, or IgE. The plate was coated with 50 ng/well of different immunoglobulins. 200 ng/mL, 50ng/mL, or 10 ng/mL of RM125 was used as the primary antibody. An alkaline phosphatase conjugated anti-rabbit IgG as the secondary antibody.



Immunohistochemistry of Human Tonsil Tissue using Anti-Human IgA2 antibody RM125.



A titer ELISA using RM125. The plate was coated with different amounts of human IgA2. A serial dilution of RM125 was used as the primary antibody. An alkaline phosphatase conjugated anti-rabbit IgG as the secondary antibody.