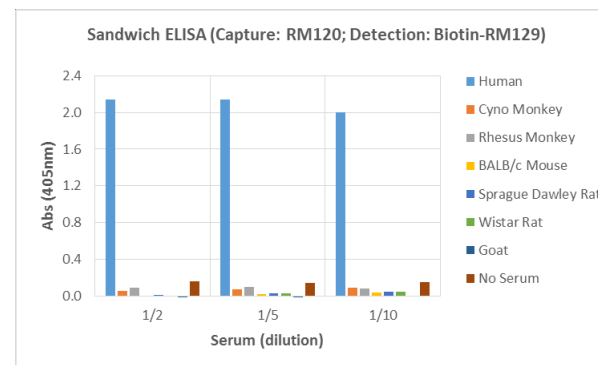
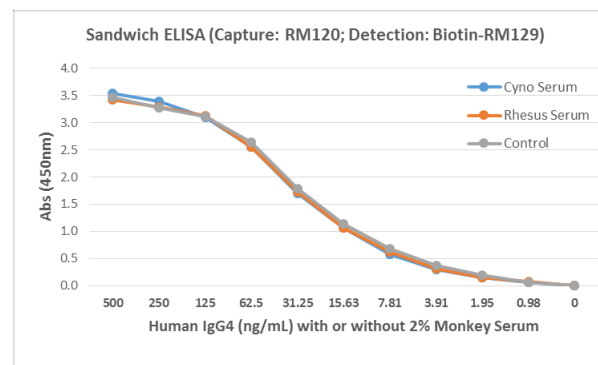


Certificate of Analysis

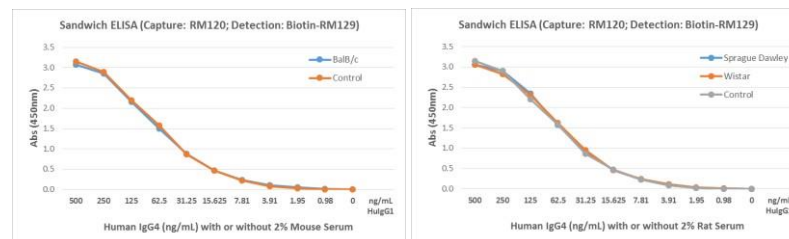
Product:	Rabbit Monoclonal Antibody Human IgG4 Matched Antibody Pair
Catalog No.:	31-1022-MK
Lot No.:	RM120 Capture Ab: RM129 Detection Ab: 10X Sample Diluent:
Specificity	This antibody pair detects only human IgG4. It does not react to monkey (Cyno or Rhesus) IgG, mouse IgG, rat IgG, or goat IgG. There is no cross reactivity to any other immunoglobulins or IgG subclasses.
Application:	Sandwich ELISA, or other Sandwich Assays.
Components:	<ol style="list-style-type: none"> Capture Antibody: Anti-Human IgG4 Rabbit Monoclonal antibody, clone RM120, 100 µg at 1.0 mg/mL in 50% Glycerol/PBS with 1% BSA and 0.09% sodium azide; Detection Antibody: Biotin Anti-Human Ig Light Chain Rabbit Monoclonal Antibody, Clone RM129, 25 µg at 1.0 mg/mL in 50% Glycerol/PBS with 1% BSA and 0.09% sodium azide; 10X Sample Diluent: Added to the tested sample to reduce non-specific background and noise
Usage:	ELISA: Capture Antibody 50ng/well – 200ng/well; Detection Antibody 0.1ug/mL – 0.5ug/mL;
Storage and Stability:	Stable for 1 Year at -20.0°C from date of receipt.
Country of Origin:	U.S.A.
Intended Use:	For Research Use Only Not for Diagnostic or Therapeutic Use



Sandwich ELISA, using RevMAB human IgG4 matched antibody pair, shows species reactivity to human only, and shows no cross-reactivity to monkey (Cyno or Rhesus) IgG, mouse IgG, rat IgG, or goat IgG.



Detection of human IgG4 in monkey serum. Sandwich ELISA using RevMAB human IgG4 matched antibody pair, followed by a HRP conjugated streptavidin.



Detection of human IgG4 in mouse or rat serum. Sandwich ELISA using RevMAB human IgG4 matched antibody pair, followed by a HRP conjugated streptavidin.