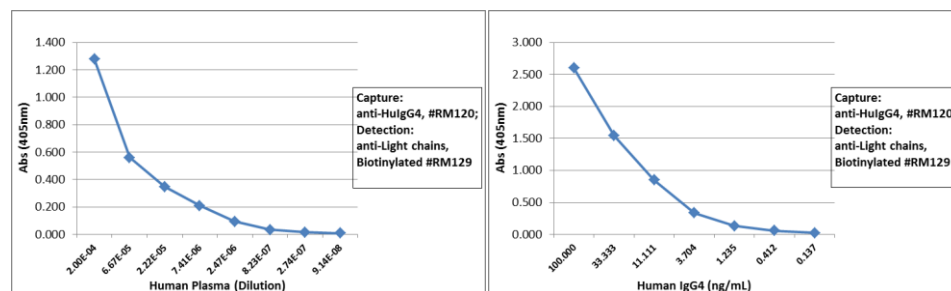
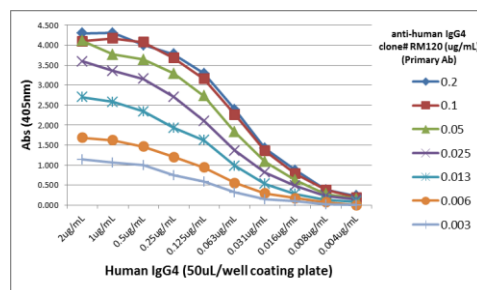


## Certificate of Analysis

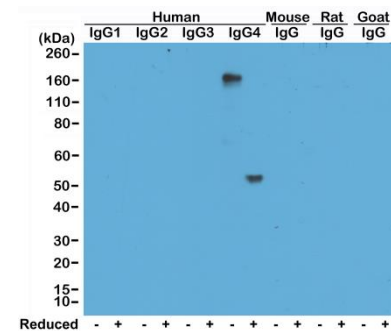
<b>Product:</b>	Rabbit Monoclonal Antibody Biotin Anti-Human IgG4 Rabbit Monoclonal Antibody, Clone RM120
<b>Catalog No.:</b>	31-1022-02
<b>Lot No.:</b>	
<b>Clone</b>	RM120
<b>Specificity</b>	This antibody reacts to the heavy chain of human IgG4. No cross reactivity with human IgG1, IgG2, IgG3, IgM, IgA, IgD, IgE, mouse IgG, rat IgG, or goat IgG.
<b>Application:</b>	ELISA, Western Blot, Immunohistochemistry, Immunocytochemistry, Flow Cytometry.
<b>Immunogen:</b>	Peptide corresponding to the hinge region of Human IgG4
<b>Purity:</b>	Protein A affinity purified from an animal origin-free culture supernatant
<b>Size:</b>	50 µg
<b>Concentration:</b>	1.0 mg/mL
<b>Buffer:</b>	50% Glycerol/PBS with 1% BSA and 0.09% sodium azide
<b>Usage:</b>	ELISA: 50ng/well – 200ng/well (for Capture); 0.05µg/mL – 0.2µg/mL (for Detection); WB: 0.5µg/mL – 2µg/mL; IHC, ICC: 1µg/mL – 10µg/mL;
<b>Storage and Stability:</b>	Stable for 1 Year at -20.0°C from date of receipt.
<b>Country of Origin:</b>	U.S.A.
<b>Intended Use:</b>	<b>For Research Use Only Not for Diagnostic or Therapeutic Use</b>



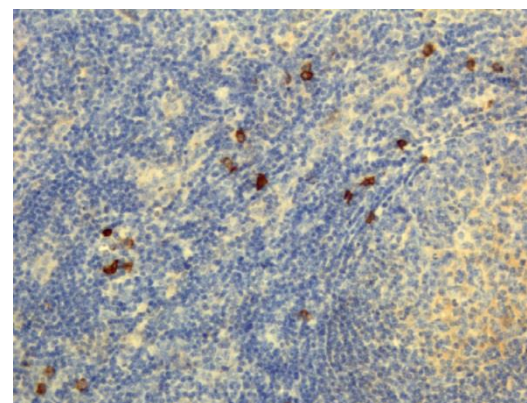
Sandwich ELISA using RM120 as the capture antibody, and Biotinylated anti-human light chains ( $\kappa+\lambda$ ) antibody RM129 as the detection antibody, followed by an AP conjugated streptavidin.



A titer ELISA using RM120. The plate was coated with different amounts of human IgG4. A serial dilution of RM120 was used as the primary antibody. An alkaline phosphatase conjugated anti-rabbit IgG as the secondary antibody.



Western Blot of human, mouse, rat, and goat IgG shows RM120 reacts to human IgG4, in both whole molecule (~150kDa, non-reduced) and heavy chain (~50kDa, reduced) forms. No cross reactivity with other isotypes of human IgG, or mouse, rat, or goat IgG.



Immunohistochemistry of Human Lymphoid Tissue using Anti-Human IgG4 antibody RM120.