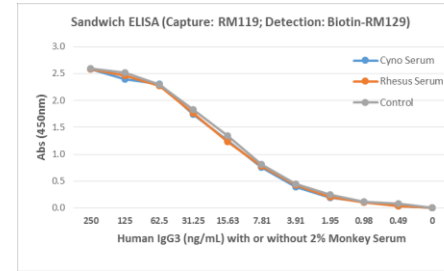
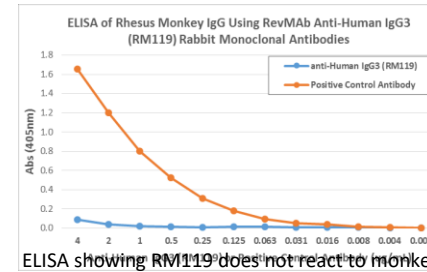
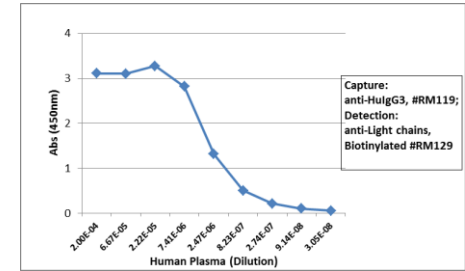


Certificate of Analysis

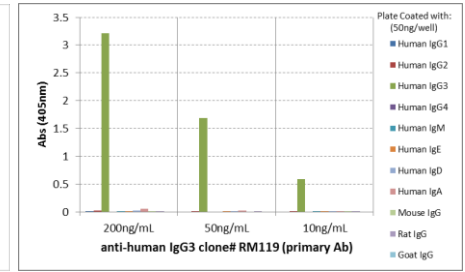
Product:	Rabbit Monoclonal Antibody Anti-Human IgG3 Rabbit Monoclonal Antibody, Clone RM119
Catalog No.:	31-1021-00
Lot No.:	
Clone	RM119
Specificity	This antibody reacts to the heavy chain of human IgG3, RM119 does not cross react to any other IgG subclasses (IgG1, IgG2, or IgG4), and shows no cross reactivity IgM, IgA, IgD, IgE. RM119 does not react to monkey (Cyno or Rhesus) IgG, mouse IgG, rat IgG, or goat IgG.
Application:	ELISA, Immunohistochemistry, Immunocytochemistry
Immunogen:	Human IgG3
Purity:	Protein A affinity purified from an animal origin-free culture supernatant
Size:	100 µg
Concentration:	1.0 mg/mL
Buffer:	50% Glycerol/PBS with 1% BSA and 0.09% sodium azide
Usage:	ELISA: 50ng/well – 200ng/well (for Capture); 0.05ug/mL – 0.2ug/mL (for Detection); IHC, ICC: 2ug/mL – 5ug/mL;
Storage and Stability:	Stable for 1 Year at -20.0°C from date of receipt.
Country of Origin:	U.S.A.
Intended Use:	For Research Use Only Not for Diagnostic or Therapeutic Use



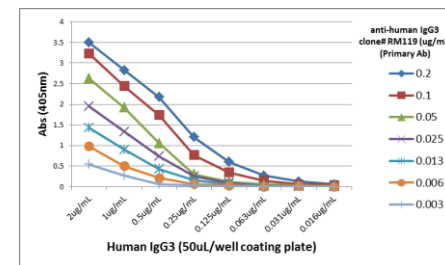
Detection of human IgG3 in monkey serum. Sandwich ELISA using RM119 as the capture antibody, and biotinylated anti-human light chains (κ or λ) antibody RM129 as the detection antibody, followed by a HRP conjugated streptavidin.



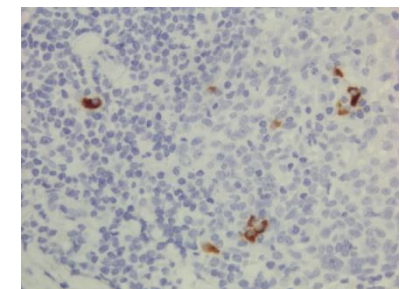
ELISA showing RM119 does not react to monkey IgG. The plate was coated with Rhesus monkey IgG. A serial dilution of RM119 and a monkey IgG binding antibody (positive control) was used as the detection antibody.



ELISA showing RM119 reacts only to human IgG3, and not to any other IgG subclasses (IgG1, IgG2, or IgG4), and no cross reactivity to IgM, IgA, IgD, IgE, mouse IgG, rat IgG, or goat IgG.



A titer ELISA using RM119. The plate was coated with different amounts of human IgG3. A serial dilution of RM119 was used as the primary antibody, followed by an alkaline phosphatase conjugated anti-rabbit IgG as the secondary antibody.



Immunohistochemical staining of formalin fixed and paraffin embedded human lymphoid tissue section using anti-human IgG3 rabbit monoclonal antibody (Clone RM119).